

# TASMANIAN STATISTICAL INDICATORS

EMBARGO: 11:30AM (CANBERRA TIME) WED 8 DEC 1999

## CONTENTS

	<i>page</i>
NOTES .....	2
MAIN FEATURES .....	3
LIST OF TABLES .....	7
 SUBJECT AREAS	
<b>1</b> Population and demography .....	9
<b>2</b> Labour force .....	10
<b>3</b> Wages and prices .....	19
<b>4</b> Production .....	23
<b>5</b> Primary industry .....	24
<b>6</b> Building .....	28
<b>7</b> Finance .....	29
<b>8</b> Tourism .....	30
<b>9</b> Transport .....	32
<b>10</b> Retail trade .....	32
<b>11</b> Overseas trade .....	33
<b>12</b> Australia and State comparisons .....	35
<b>13</b> Tasmanian Statistical Divisions comparisons .....	36
 ADDITIONAL INFORMATION	
Map: Tasmanian Statistical Divisions .....	37

- For further information about these and related statistics, contact Client Services in any ABS office as shown on the back cover of this publication, or Jackie Saarinen on Hobart 03 6222 5812.

## NOTES

FORTHCOMING ISSUES	ISSUE	RELEASE DATE
	January 2000	10 January
	February 2000	8 February
	March 2000	8 March

**INTRODUCTION**

1 This publication contains latest figures for a comprehensive range of economic indicators. Statistics shown in this publication are the latest available at the date of preparation and may be subject to revision in subsequent issues. In a number of cases figures appearing in this publication are preliminary and are subject to revision in subsequent issues. Reference should therefore always be made to the latest issue or to the statistical publication on the specific subject.

**SEASONAL ADJUSTMENT AND TREND ESTIMATION**

2 Seasonal adjustment is a means of removing the estimated effects of normal seasonal variation from the series so that the effects of other influences on the series can be more clearly recognised. Seasonal adjustment does not aim to remove the irregular or non-seasonal influences which may be present in any particular month. This means that month-to-month movements of the seasonally adjusted estimates may not be reliable indicators of trend behaviour.

3 The smoothing of seasonally adjusted series reduces the impact of the irregular components of the seasonally adjusted series and creates trend estimates. These trend estimates are derived by applying a 13-term Henderson-weighted moving average to all months except the last six. The last six monthly trend estimates are obtained by applying surrogates of the Henderson average to the seasonally adjusted series. Trend series are used to measure the underlying behaviour of the series over time.

4 While this smoothing technique enables estimates to be produced for the latest month, it does result in revisions to the most recent months as additional observations become available. Generally, subsequent revisions become smaller and after 3 months have a negligible impact on the series. Revisions also occur as a result of the annual review of seasonal factors.

**ABBREVIATIONS AND SYMBOLS**

n.a.	not available
n.p.	not available for separate publication (but included in totals where applicable)
n.y.a.	not yet available
..	not applicable
—	nil or rounded to zero
p	preliminary—figure or series subject to revision
r	figure or series revised since previous issue

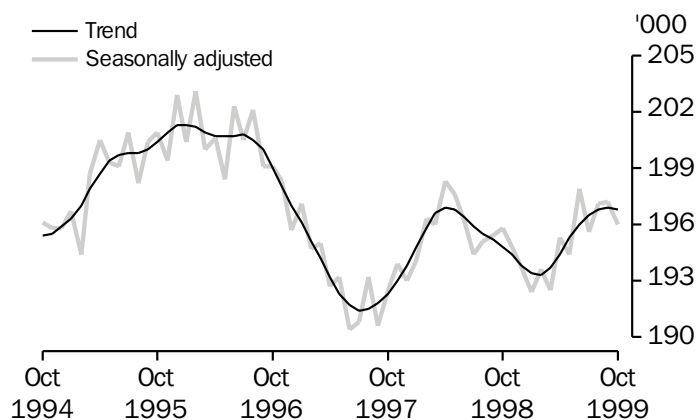
Stevan R. Matheson  
Regional Director, Tasmania

## MAIN FEATURES

### EMPLOYMENT

Trend estimates There was an increase of 1.0% in Tasmania's employment over the 12 months to October 1999. The largest percentage increase in employment was in New South Wales (2.7%), followed by South Australia (2.4%), Victoria (2.3%), Western Australia (2.2%) and Queensland (1.7%). (See table 39.)

### EMPLOYMENT, TASMANIA

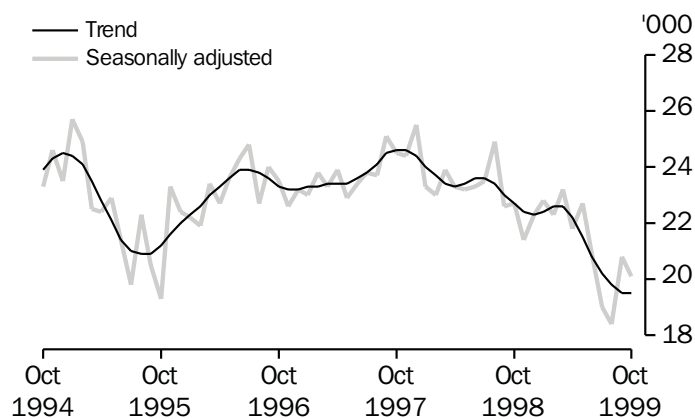


### THE LABOUR FORCE

Trend estimates There were an estimated 216,300 persons (based on *trend* estimates) in the labour force in October 1999 and an estimated 370,000 civilian Tasmanians aged 15 years or more, yielding a labour force participation rate of 58.5%. This compares with 58.8% in October 1998.

For males, the *trend* estimate of the participation rate was 68.0%, compared with 68.1% in October 1998. For females, the *trend* estimate of the participation rate was 49.4%, compared with 49.9% in October 1998. (See table 3.)

### UNEMPLOYMENT, TASMANIA



## UNEMPLOYMENT

Trend estimates The *trend* estimate of the number of unemployed persons in Tasmania for October 1999 was 19,500. This compares with 22,700 for October 1998. The *trend* estimate of the unemployment rate of 9.0% in October 1999 compares with 10.4% in October 1998. (See table 3.)

## CONSUMER PRICE INDEX

The Consumer Price Index All Groups Index for Hobart rose by 0.7% in the September quarter of 1999 and by 0.4% for the year ending September 1999. This compared with an increase of 0.9% for the weighted average of the eight capital cities for the September quarter, and a rise of 1.7% for the year.

All capital cities recorded an increase in the index for the year ending September 1999, with Melbourne and Perth recording the largest increase at 1.9%.

Nationally, components contributing most to the increase for the September quarter were automotive fuel (up 8.8%), property rates and charges (up 5.2%) and fresh fruit (up 4.2%). Offsetting falls were recorded in fresh vegetables (down 6.1%), and audio, visual and computing equipment (down 5.9%). (See table 17.)

BUILDING MATERIALS PRICE INDEX The price index of materials used in house building in Hobart increased by 0.2% during the September quarter 1999, but decreased by 0.3% during the year ending September 1999. The weighted average of the six State capital cities increased by 0.9% over the same period.

For materials used in building other than house building, the price index for Hobart increased by 0.2% during the September quarter 1999, and increased by 0.1% during the year ending September 1999. The weighted average of the six State capital cities decreased by 0.2% over the quarter, but increased by 0.3% over the year ending September 1999.

Components in Hobart's price index of materials other than house building that recorded the largest increases over the year ending September 1999 were sand and aggregate (up 5.9%), and steel decking and cladding (up 2.2%). These rises were offset by a fall in the prices of builders hardware (down 2.6%) and clay bricks (down 2.5%). (See tables 15 and 18.)

## LIVESTOCK SLAUGHTERING

Trend Estimates In September 1999, the *trend* estimate for Tasmania for the slaughtering of cattle and calves increased by 3.7% over the previous month. Over the same period, the number of sheep and lambs slaughtered increased by 4.1% and the number of pigs slaughtered fell by 1.0%.

In September 1999, the *trend* estimate of the number of cattle and calves slaughtered was 27,100. This was 15.3% more than the number for September 1998 and 20.1% above the number for September 1997.

The *trend* estimate for the slaughtering of sheep and lambs was 98,100 in September 1999. This was 26.0% more than for September 1998, and 29.0% above the number for September 1997.

The *trend* estimate of 6,700 pigs slaughtered in September 1999 was 1.9% less than for September 1998, but 4.8% above the *trend* estimate for September 1997. (See table 21.)

## MANUFACTURING

Turnover for the year 1997-98 by manufacturing establishments operating in Tasmania was \$4,998 million, which resulted in an industry value added (IVA) for the year of \$1,581 million. (IVA represents the value added by an industry to the intermediate inputs used by the industry.) For turnover, this represents a 5.4% increase in current price terms from the \$4,743 million recorded for 1996-97. These manufacturing establishments employed 20,900 persons at the end of June 1998 and paid \$729 million in wages and salaries in 1997-98. The percentage of Australian manufacturing employment in Tasmania at the end of June 1998 was 2.2%.

Tasmanian manufacturers directly exported \$1,586 million of the goods that they produced. This represents a 23.2% increase on the \$1,287 million recorded for 1996-97. The percentage of the total sales and transfers out of goods for sale produced that were exported has also increased (from 28.5% for 1996-97 to 33.3% for 1997-98). In 1997-98, Tasmania directly exported a higher percentage of goods than any other State. This was also the case from 1994-95 to 1996-97 (inclusive).

## BUILDING APPROVALS

Original terms There were 116 dwelling units approved during September 1999 in Tasmania, comprising 114 new houses and 2 new other residential dwellings.

The number of dwelling units approved during September 1999 was 1.7% below the August 1999 figure of 118, and 16.5% below the September 1998 figure of 139. For the twelve months ended September 1999 there were 1,414 new dwelling units approved, 10.6% below the 1,581 units recorded for the twelve months ended September 1998.

At current prices, the value of new residential building approved in September 1999 was \$11.6 million. The value of total building increased \$10.5 million (40.7%) to \$36.3 million in September when compared with August 1999. The rise can be attributed to an increase of \$11.2 million in the value of non-residential buildings to \$21.3 million. Shops and Factories accounted for \$11.8 million of this total. (See table 27 and ABS catalogue number 8731.6.) (See table 27.)

## BUILDING ACTIVITY

Seasonally adjusted terms The total number of dwelling units commenced decreased by 5.9% in the June quarter 1999, to 332, a new low for the series. Commencements of new private-sector houses decreased by 8.6%.

In chain volume terms, which measure changes in value after the direct effects of price changes have been eliminated and therefore only reflect volume changes, the value of building work done rose by 4.9% in the June quarter to \$86.4 million. The increase from the March quarter was, however, from the lowest level recorded for the series. The increase was due to a rise in work done on non-residential building, up by 12.9% to \$42.5 million. Work done on new residential building fell by 6.7% to \$33.6 million, a new low for the series.

Original terms The value of work yet to be done on jobs under construction at the end of June 1999 rose by 1.5% to \$93.8 million. This is 1.09 times the value of work done for the quarter (1.24 for residential building and 0.94 for non-residential). (Source: *Building Activity, Tasmania*, ABS catalogue number 8752.6)

#### HOUSING FINANCE

Trend estimates The *trend* estimate for the number of secured housing finance commitments entered into in Tasmania for the month of September was 830, a small increase on the previous month's 827. Previously, the *trend* estimate had declined between February 1999 and August 1999, from 905 to 827 (a decrease of 9%). In contrast, the National estimate increased during the same period, from 41,527 to 44,791 (an increase of 8%).

The *trend* estimate for the total value of commitments for the month of September was \$64 million. The Tasmanian estimate has been in decline since February 1999, from \$77 million (a decrease of 17%). This is in contrast to the National estimate which has been increasing, from \$5,343 million to \$5,979 million (an increase of 12%) over the same period. (See table 28.)

#### NEW MOTOR VEHICLE REGISTRATIONS

Original terms There were 1,458 new motor vehicles (excluding motorcycles) registered in Tasmania during September 1999. This was 14.8% above the 1,270 registered in August 1999 and 2.5% below the September 1998 figure of 1,496. Of the new motor vehicles (excluding motorcycles) registered in September 1999 in Tasmania, 470 were vehicles registered by vehicle rental businesses, compared with 235 registered by vehicle rental businesses in August 1999 and 408 in September 1998. (See table 34.)

#### RETAIL

Trend estimates In *trend* terms, the estimate of retail turnover in Australia for September 1999 was \$11,905.1 million, 6.9% above the figure recorded in September 1998. In *trend* terms, the estimate of retail turnover in Tasmania for September 1999 was \$271.7 million, 5.7% above the figure recorded in September 1998. (See table 35.)

#### OVERSEAS TRADE

The total value of Tasmania's overseas exports for the 1998-99 financial year was \$2,018 million. This contributed 2.3% to the Australian total of \$86,017 million. For the financial year 1998-99, major commodity groups exported were non-ferrous metals (\$544.3m), wood and woodchips (\$295.4m) and metalliferous ores and metal scrap (\$278.0m).

The value of Tasmania's exports for the month of September 1999 was \$114 million, a decrease of 24% over the month of August. Australia's exports for September totalled \$7,412 million, an increase of 1% over the August figure. (See tables 38-40).

## LIST OF TABLES

	Page
<b>1</b> Population	9
<b>2</b> Births, deaths and marriages	9
<b>3</b> Labour force status	10
<b>4</b> Labour force status by region, males	11
<b>5</b> Labour force status by region, females	12
<b>6</b> Labour force status by region, persons	13
<b>7</b> Teenage labour market	14
<b>8</b> All employed persons by occupation	15
<b>9</b> Employed wage and salary earners, sector and industry	16
<b>10</b> Average hours worked	16
<b>11</b> Job vacancies	17
<b>12</b> Industrial disputes	17
<b>13</b> Average weekly earnings of employees	18
<b>14</b> Indexes of total hourly rates of pay	18
<b>15</b> Summary of annual movements in wages and prices	19
<b>16</b> House price index numbers, Hobart	19
<b>17</b> Consumer price index, Hobart and eight capital cities combined	20
<b>18</b> Price index of materials used in building other than house building, Hobart	21
<b>19</b> Production of selected commodities	23
<b>20</b> Livestock slaughtering: original	24
<b>21</b> Livestock slaughtering: seasonally adjusted and trend	24
<b>22</b> Meat production	25
<b>23</b> Principal mineral concentrates produced	25
<b>24</b> Sawmills and plywood mills, logs delivered and timber produced	26
<b>25</b> Chipping and grinding of wood	26
<b>26</b> Logs delivered for milling or chipping	27
<b>27</b> Building approvals	28
<b>28</b> Secured housing commitments	28
<b>29</b> Banking statistics	29
<b>30</b> Private new capital expenditure by type of asset	29

## LIST OF TABLES—continued

	Page
<b>31</b> Accommodation establishments	30
<b>32</b> National Parks, person entries	31
<b>33</b> Tracks in National Parks, walker registrations	31
<b>34</b> Registrations of new motor vehicles	32
<b>35</b> Turnover of retail establishments at current prices	32
<b>36</b> Value of overseas trade—Tasmania and Australia	33
<b>37</b> Merchandise exports by selected countries and country groups	33
<b>38</b> Merchandise exports by selected commodity groups	34
<b>39</b> Major Statistical Indicators—Australia and State comparisons	35
<b>40</b> Major Statistical Indicators—Tasmanian Statistical Divisions	36



# 1

## POPULATION: Original

Year or quarter	Estimated resident population at end of period	Natural increase <sup>1</sup>	Net estimated migration gain	Total population growth	Annual growth rate <sup>2</sup>
	'000	'000	'000	'000	%
<b>Year ended 30 June</b>					
1996	474.4	2.5	-2.2	0.8	0.16
1997	473.5	2.4	-3.4	-1.0	-0.20
1998	471.7	2.1	-3.7	-1.6	-0.38
<b>Quarter 1997</b>					
March	474.1	0.6	-0.8	-0.2	-0.02
June	473.5	0.5	-1.1	-0.6	-0.20
September	473.1	0.4	-0.9	-0.4	-0.31
December	472.6	0.5	-1.0	-0.4	-0.34
<b>1998</b>					
March	472.3	0.6	-1.0	-0.3	-0.38
June	471.7	0.5	-1.1	-0.6	-0.38
September p	471.4	0.5	-0.8	-0.3	-0.36
December p	470.9	0.7	-1.2	-0.4	-0.36
<b>1999</b>					
March p	470.5	0.6	-1.0	-0.5	-0.39

<sup>1</sup> Excess of live births registered over deaths registered (based on usual State of residence).  
<sup>2</sup> Percentage growth from same quarter in previous year.  
(Source: Australian Demographic Statistics, ABS catalogue number 3101.0)

# 2

## BIRTHS, DEATHS AND MARRIAGES (BY STATE OF USUAL RESIDENCE): Original

Year or quarter	Births		Deaths		Infant mortality <sup>1</sup>		Marriages	
	No.	Rate <sup>2</sup>	No.	Rate <sup>3</sup>	Deaths	Rate <sup>4</sup>	No.	Rate <sup>5</sup>
<b>Year ended 31 December</b>								
1996	6 337	1.854	3 826	7.0	28	4.4	2 654	5.6
1997	5 974	1.768	3 837	6.8	43	7.2	2 672	5.6
1998	5 909	1.809	3 557	6.3	30	5.1	2 599	5.5
<b>Quarter 1997</b>								
March	1 483	..	843	..	7	4.7	900	..
June	1 505	..	988	..	12	8.0	600	..
September	1 500	..	1 067	..	12	8.0	554	..
December	1 486	..	939	..	12	8.1	618	..
<b>1998</b>								
March	1 464	..	839	..	3	2.0	800	..
June	1 420	..	921	..	11	7.7	810	..
September	1 541	..	1 029	..	9	5.8	331	..
December	1 484	..	768	..	7	4.7	658	..
<b>1999</b>								
March p	1 471	..	914	..	9	6.1	808	..

<sup>1</sup> Deaths of children under one year of age.

<sup>2</sup> Total fertility rate. The sum of age-specific fertility rates (live births at each age of mother per female population of that age). It represents the number of children a woman would bear during her lifetime if she experienced current age-specific fertility rates at each age of her reproductive life.

<sup>3</sup> Standardised death rate. The overall death rate, per 1,000 persons, that would have prevailed in a standard population if it had experienced at each age the death rates of the population being studied. The standard population used in these calculations is all persons in the 1991 Australian population.

<sup>4</sup> Rate per 1,000 live births.

<sup>5</sup> Crude marriage rate is the number of marriages registered during the calendar year, per 1,000 estimated resident population at 30 June of that year.  
(Source: Australian Demographic Statistics, ABS catalogue number 3101.0)

## 3

LABOUR FORCE STATUS<sup>1</sup>: **Seasonally adjusted and trend**

Month	Seasonally adjusted series <sup>2</sup>				Trend series <sup>2</sup>			
	Employed	Unemployed	Unemployment rate	Participation rate	Employed	Unemployed	Unemployment rate	Participation rate
	'000	'000	%	%	'000	'000	%	%
MALES								
<b>1998</b>								
October	109.3	14.5	11.7	68.6	108.5	14.4	11.7	68.1
November	109.2	13.3	10.8	67.9	108.3	14.2	11.6	67.9
December	108.6	13.0	10.7	67.4	107.9	14.2	11.6	67.7
<b>1999</b>								
January	106.4	15.1	12.4	67.4	107.6	14.5	11.8	67.6
February	106.6	15.4	12.6	67.6	107.5	14.8	12.1	67.8
March	107.3	15.4	12.6	68.1	107.9	14.9	12.1	68.1
April	109.5	13.9	11.3	68.4	108.7	14.6	11.8	68.4
May	109.4	14.7	11.9	68.9	109.6	14.1	11.4	68.6
June	111.3	13.3	10.7	69.2	110.2	13.4	10.8	68.6
July	110.4	12.6	10.3	68.2	110.5	12.9	10.4	68.5
August	110.7	11.3	9.3	67.7	110.6	12.5	10.2	68.3
September	110.3	13.1	10.6	68.5	110.5	12.3	10.0	68.1
October	109.8	12.4	10.1	67.8	110.3	12.1	9.9	68.0
FEMALES								
<b>1998</b>								
October	86.5	8.2	8.7	50.0	86.3	8.3	8.8	49.9
November	85.5	8.1	8.7	49.4	86.1	8.2	8.7	49.8
December	85.1	9.3	9.8	49.8	85.9	8.1	8.6	49.6
<b>1999</b>								
January	86.0	7.7	8.2	49.4	85.8	8.0	8.5	49.5
February	87.0	6.9	7.4	49.5	85.8	7.9	8.4	49.4
March	85.2	7.8	8.4	49.0	85.8	7.7	8.3	49.3
April	85.8	7.9	8.4	49.4	85.7	7.6	8.1	49.2
May	85.0	8.0	8.6	49.0	85.7	7.5	8.0	49.1
June	86.6	7.5	8.0	49.6	85.8	7.4	7.9	49.1
July	85.3	6.4	7.0	48.3	86.0	7.3	7.8	49.2
August	86.4	7.1	7.6	49.3	86.2	7.3	7.8	49.2
September	86.9	7.7	8.1	49.8	86.4	7.3	7.8	49.4
October	86.2	7.7	8.2	49.5	86.5	7.4	7.8	49.4
TOTAL								
<b>1998</b>								
October	195.8	22.7	10.4	59.1	194.8	22.7	10.4	58.8
November	194.8	21.4	9.9	58.5	194.4	22.4	10.3	58.6
December	193.7	22.3	10.3	58.4	193.8	22.3	10.3	58.4
<b>1999</b>								
January	192.4	22.8	10.6	58.2	193.4	22.4	10.4	58.3
February	193.6	22.3	10.3	58.4	193.3	22.6	10.5	58.4
March	192.5	23.2	10.8	58.3	193.7	22.6	10.4	58.4
April	195.3	21.8	10.0	58.7	194.4	22.2	10.2	58.5
May	194.4	22.7	10.5	58.7	195.3	21.5	9.9	58.6
June	197.9	20.9	9.5	59.1	196.0	20.8	9.6	58.6
July	195.6	19.0	8.9	58.0	196.5	20.2	9.3	58.6
August	197.1	18.4	8.5	58.3	196.8	19.8	9.1	58.5
September	197.2	20.8	9.5	58.9	196.9	19.5	9.0	58.5
October	196.0	20.1	9.3	58.4	196.8	19.5	9.0	58.5

<sup>1</sup> For explanation of terms and concepts, refer to *Labour Force, Australia*, ABS catalogue number 6203.0.

<sup>2</sup> Seasonal factors are reviewed annually to take account of each additional year's original data. The results of the review are used to compile revised seasonally adjusted and trend estimates each February. Trend estimates for the most recent months are also revised each month; see Notes on page 2.

(Source: *Labour Force Australia*, ABS catalogue number 6203.0)

# 4

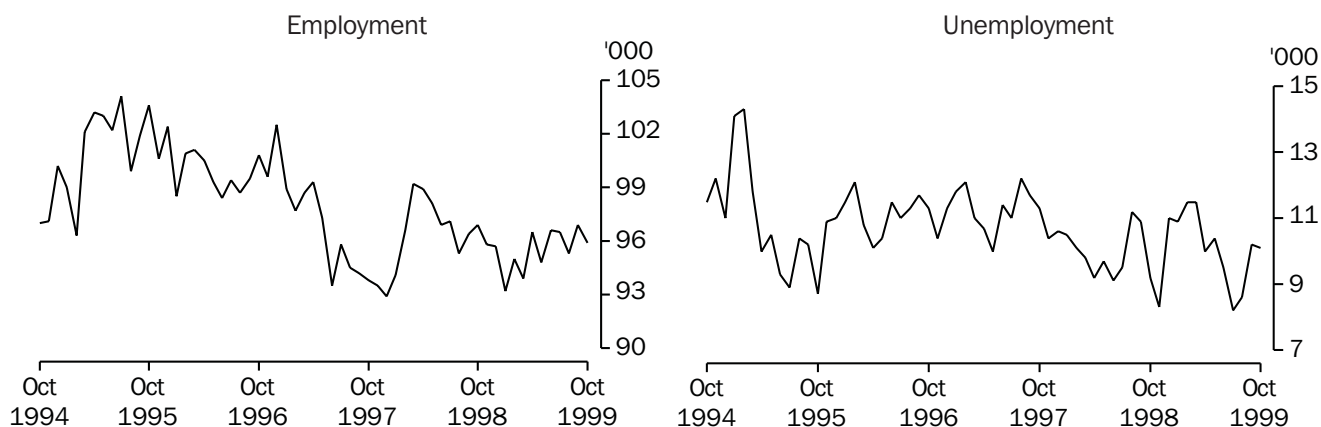
## LABOUR FORCE STATUS BY REGION, MALES<sup>1, 2</sup>: **Original**

	<i>Total employed</i>	<i>Total unemployed</i>	<i>Unemployment rate</i>	<i>Participation rate</i>
<i>Month</i>	'000	'000	%	%
HOBART AND SOUTHERN STATISTICAL DIVISIONS				
1996				
October	55.7	5.9	9.5	70.0
1998				
October	52.5	5.8	9.9	67.1
1999				
August	52.2	5.2	9.1	65.1
September	53.6	6.4	10.6	67.4
October	53.4	5.6	9.5	66.3
NORTHERN STATISTICAL DIVISION				
1996				
October	32.3	4.5	12.3	71.6
1998				
October	31.6	4.5	12.4	70.6
1999				
August	33.0	3.0	8.2	68.9
September	32.4	3.2	9.1	70.0
October	31.7	3.1	8.9	67.7
MERSEY-LYELL STATISTICAL DIVISION				
1996				
October	24.7	3.1	11.1	68.0
1998				
October	24.6	3.9	13.7	67.2
1999				
August	24.0	3.0	11.1	67.8
September	24.0	3.2	11.7	67.5
October	24.1	3.4	12.4	69.1
TASMANIA				
1996				
October	112.7	13.5	10.7	70.0
1998				
October	108.7	14.1	11.5	68.1
1999				
August	109.2	11.2	9.3	66.8
September	110.1	12.8	10.4	68.2
October	109.2	12.1	10.0	67.3

<sup>1</sup> For explanation of terms and concepts, refer to *Labour Force, Australia*, ABS catalogue number 6203.0.

<sup>2</sup> Data in this table are original series, i.e. they are not part of a seasonally adjusted or a trend series. Accordingly, care should be exercised when using these data. New monthly data from each quarter (March, June, September and December) are published two months after the quarter. (Source: Labour Force Estimates—microfiche tables.)

Hobart and Southern Statistical Divisions—Persons: **Original** (see Table 6.)



# 5

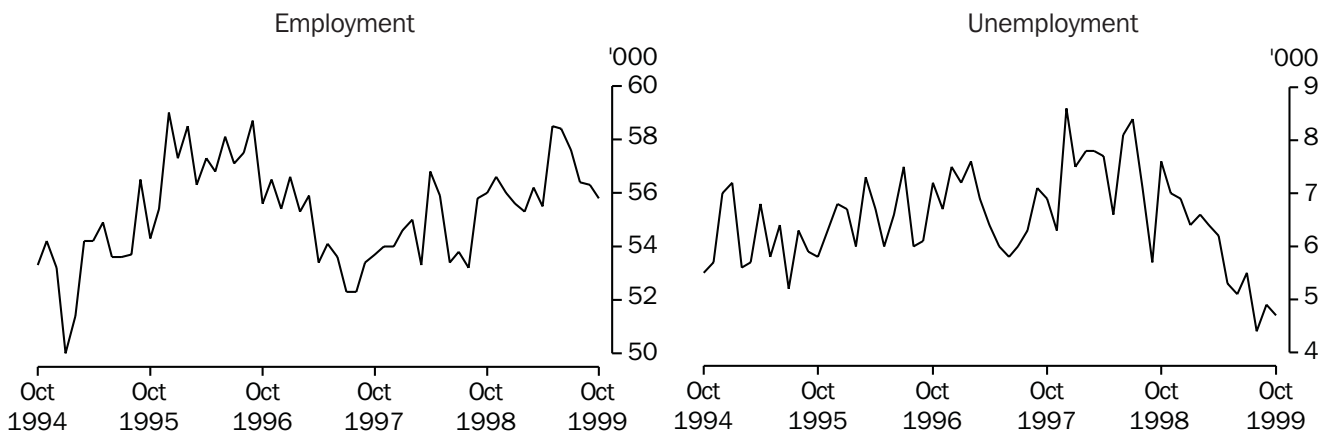
## LABOUR FORCE STATUS BY REGION, FEMALES<sup>1, 2</sup>: **Original**

Month	Total employed	Total unemployed	Unemployment rate	Participation rate
	'000	'000	%	%
HOBART AND SOUTHERN STATISTICAL DIVISIONS				
1996				
October	45.1	5.4	10.7	53.7
1998				
October	44.3	3.5	7.2	51.7
1999				
August	43.1	3.3	7.2	49.2
September	43.4	3.9	8.2	50.3
October	42.5	4.5	9.5	49.7
NORTHERN STATISTICAL DIVISION				
1996				
October	23.3	2.7	10.4	49.4
1998				
October	24.4	3.2	11.5	51.4
1999				
August	23.4	1.4	5.7	46.8
September	23.9	1.7	6.7	48.3
October	24.1	1.6	6.2	48.0
MERSEY-LYELL STATISTICAL DIVISION				
1996				
October	17.2	1.8	9.4	45.3
1998				
October	17.7	2.0	10.2	45.5
1999				
August	18.6	2.3	10.9	49.6
September	20.2	1.9	8.6	51.5
October	19.6	2.1	9.7	51.9
TASMANIA				
1996				
October	85.6	9.9	10.4	50.6
1998				
October	86.5	8.6	9.1	50.2
1999				
August	85.2	7.0	7.6	48.6
September	87.4	7.5	7.9	50.0
October	86.2	8.2	8.7	49.7

<sup>1</sup> For explanation of terms and concepts, refer to *Labour Force, Australia*, ABS catalogue number 6203.0.

<sup>2</sup> Data in this table are original series, i.e. they are not part of a seasonally adjusted or a trend series. Accordingly, care should be exercised when using these data. New monthly data from each quarter (March, June, September and December) are published two months after the quarter. (Source: Labour Force Estimates—microfiche tables.)

Northern Statistical Division—Persons: **Original** (see Table 6.)



# 6

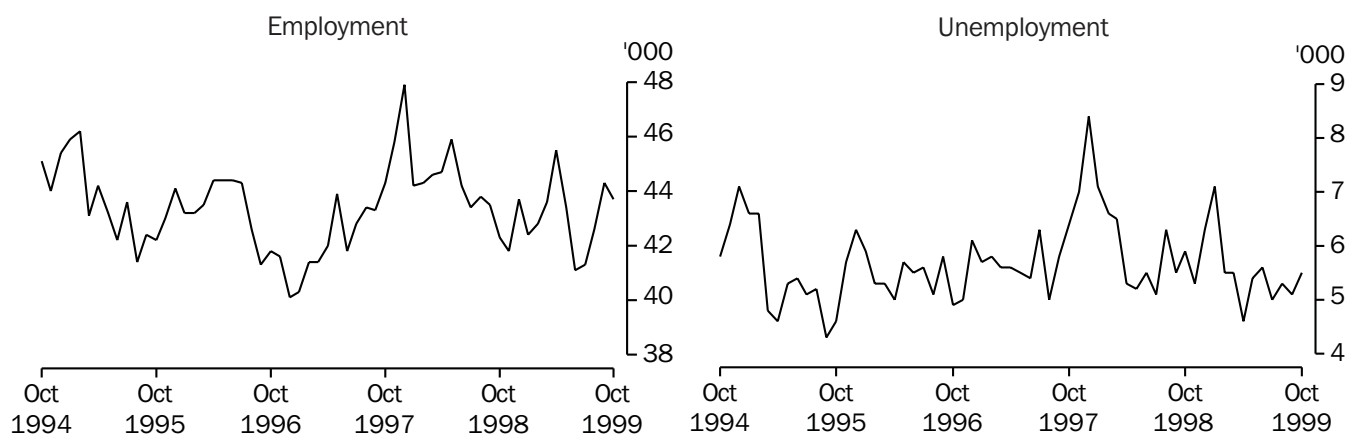
## LABOUR FORCE STATUS BY REGION, PERSONS<sup>1, 2</sup>: Original

	Total employed	Total unemployed	Unemployment rate	Participation rate
Month	'000	'000	%	%
HOBART AND SOUTHERN STATISTICAL DIVISIONS				
1996				
October	100.8	11.3	10.1	61.6
1998				
October	96.9	9.2	8.7	59.2
1999				
August	95.3	8.6	8.3	56.9
September	96.9	10.2	9.6	58.6
October	95.9	10.1	9.5	57.8
NORTHERN STATISTICAL DIVISION				
1996				
October	55.6	7.2	11.5	60.4
1998				
October	56.0	7.6	12.0	60.8
1999				
August	56.4	4.4	7.2	57.7
September	56.3	4.9	8.1	59.0
October	55.8	4.7	7.7	57.6
MERSEY-LYELL STATISTICAL DIVISION				
1996				
October	41.8	4.9	10.4	56.5
1998				
October	42.3	5.9	12.2	56.2
1999				
August	42.6	5.3	11.1	58.4
September	44.3	5.1	10.3	59.3
October	43.7	5.5	11.2	60.3
TASMANIA				
1996				
October	198.3	23.4	10.5	60.1
1998				
October	195.2	22.8	10.4	58.9
1999				
August	194.3	18.3	8.6	57.5
September	197.5	20.2	9.3	58.9
October	195.4	20.3	9.4	58.3

<sup>1</sup> For explanation of terms and concepts, refer to *Labour Force, Australia*, ABS catalogue number 6203.0.

<sup>2</sup> Data in this table are original series, i.e. they are not part of a seasonally adjusted or a trend series. Accordingly, care should be exercised when using these data. New monthly data from each quarter (March, June, September and December) are published two months after the quarter. (Source: Labour Force Estimates—microfiche tables.)

Mersey-Lyell Statistical Division—Persons: **Original** (see Table 6.)



## 7

TEENAGE LABOUR MARKET<sup>1, 2, 3</sup>: Original

Month	Employed		Unemployed		Labour force	Not in labour force	Civilian population aged 15–19	Unemployment rate	Unemployment population ratio	Participation rate
	Full-time	Total	Looking for full-time work	Total						
	'000	'000	'000	'000	'000	'000	'000	%	%	%
ATTENDING NEITHER SCHOOL NOR A TERTIARY INSTITUTION FULL TIME										
1996										
October	6.9	8.3	1.7	1.8	10.1	1.7	11.8	17.7	15.2	85.6
1998										
October	6.1	8.5	2.2	2.2	10.7	1.2	12.0	20.3	18.2	89.6
1999										
August	6.1	7.5	1.7	2.0	9.4	1.8	11.3	20.9	17.5	83.9
September	5.8	7.4	1.8	2.1	9.5	1.3	10.8	22.2	19.6	88.0
October	6.6	8.3	1.2	1.4	9.6	1.7	11.3	14.4	12.3	85.2
ATTENDING SCHOOL OR A TERTIARY INSTITUTION FULL TIME										
1996										
October	0.3	6.3	0.2	2.1	8.4	13.7	22.0	25.0	9.5	38.0
1998										
October	0.2	5.9	0.2	1.4	7.3	15.2	22.4	18.9	6.1	32.4
1999										
August	–	6.0	0.2	0.8	6.8	16.6	23.4	11.8	3.4	29.1
September	–	6.7	0.7	2.2	8.9	15.0	23.9	25.1	9.3	37.3
October	–	6.8	0.7	2.1	8.9	14.5	23.4	23.6	9.0	37.9
TOTAL										
1996										
October	7.2	14.6	1.9	3.9	18.5	15.4	33.9	21.0	11.5	54.6
1998										
October	6.2	14.4	2.4	3.6	18.0	16.4	34.4	19.8	10.3	52.3
1999										
August	6.1	13.5	1.9	2.8	16.2	18.4	34.6	17.1	8.0	46.9
September	5.8	14.1	2.5	4.3	18.4	16.3	34.7	23.6	12.5	53.1
October	6.6	15.0	1.9	3.5	18.5	16.2	34.7	18.8	10.0	53.3

<sup>1</sup> Persons aged 15–19 years.

<sup>2</sup> For explanation of terms and concepts, refer to *Labour Force, Australia*, ABS catalogue number 6203.0.

<sup>3</sup> Care should be exercised in using these series as some estimates are subject to high sampling variability. (Source: Labour Force Estimates—unpublished data.)

## 8

ALL EMPLOYED PERSONS BY OCCUPATION<sup>1</sup>: Original

Occupation	August 1998	August 1999		Proportion of total employed		
	Persons	Males	Females	Persons	August 1998	August 1999
	'000	'000	'000	'000	%	%
<b>Managers and administrators</b>	<b>10.6</b>	<b>11.5</b>	<b>2.8</b>	<b>14.3</b>	<b>5.5</b>	<b>7.4</b>
Generalist managers	1.2	1.8	0.2	2.1	0.6	1.1
Specialist managers	3.6	2.8	0.7	3.4	1.9	1.7
Farmers and farm managers	5.8	6.9	1.9	8.8	3.0	4.5
<b>Professionals</b>	<b>30.0</b>	<b>15.4</b>	<b>16.8</b>	<b>32.2</b>	<b>15.6</b>	<b>16.6</b>
Science, building and engineering professionals	3.3	2.4	0.3	2.7	1.7	1.4
Business and information professionals	5.5	3.0	1.3	4.3	2.9	2.2
Health professionals	7.6	2.0	5.8	7.9	4.0	4.1
Education professionals	8.3	3.9	6.0	9.9	4.3	5.1
Social, arts and miscellaneous professionals	5.2	4.1	3.3	7.4	2.7	3.8
<b>Associate professionals</b>	<b>18.5</b>	<b>11.9</b>	<b>7.2</b>	<b>19.1</b>	<b>9.6</b>	<b>9.8</b>
Science, engineering and related associate professionals	2.4	2.1	0.4	2.5	1.2	1.3
Business and administration associate professionals	3.4	2.5	2.0	4.5	1.8	2.3
Managing supervisors (sales and service)	9.2	5.5	3.2	8.7	4.8	4.5
Other associate professionals	3.5	1.8	1.6	3.4	1.8	1.7
<b>Tradespersons and related workers</b>	<b>24.7</b>	<b>23.7</b>	<b>2.4</b>	<b>26.1</b>	<b>12.9</b>	<b>13.4</b>
Mechanical and fabrication engineering tradespersons	5.2	5.1	—	5.1	2.7	2.6
Automotive tradespersons	2.9	2.5	—	2.5	1.5	1.3
Electrical and electronics tradespersons	3.8	5.3	—	5.3	2.0	2.7
Construction Tradespersons	4.9	5.3	—	5.3	2.6	2.7
Other tradespersons and related workers	10.9	5.5	2.4	8.0	5.7	4.1
<b>Advanced clerical and service workers</b>	<b>4.3</b>	<b>1.4</b>	<b>3.8</b>	<b>5.2</b>	<b>2.2</b>	<b>2.7</b>
Secretaries and personal assistants	2.9	—	2.6	2.6	1.5	1.3
Other advanced clerical and service workers	1.4	1.4	1.3	2.7	0.7	1.4
<b>Intermediate clerical, sales and service workers</b>	<b>40.5</b>	<b>10.4</b>	<b>29.1</b>	<b>39.5</b>	<b>21.1</b>	<b>20.3</b>
Intermediate clerical workers	24.6	5.0	17.6	22.6	12.8	11.6
Intermediate sales and related workers	2.9	2.6	0.7	3.3	1.5	1.7
Intermediate service workers	12.9	2.8	10.8	13.6	6.7	7.0
<b>Intermediate production and transport workers</b>	<b>19.6</b>	<b>17.7</b>	<b>1.9</b>	<b>19.6</b>	<b>10.2</b>	<b>10.1</b>
Intermediate plant operators	6.9	4.8	—	4.8	3.6	2.5
Intermediate machine operators	2.2	2.0	0.6	2.6	1.1	1.3
Road and rail transport drivers	5.8	7.1	0.2	7.3	3.0	3.8
Other intermediate production and transport workers	4.7	3.8	1.0	4.9	2.4	2.5
<b>Elementary clerical, sales and service workers</b>	<b>22.1</b>	<b>5.2</b>	<b>13.2</b>	<b>18.4</b>	<b>11.5</b>	<b>9.5</b>
Elementary clerks	1.3	0.3	0.9	1.2	0.7	0.6
Elementary sales workers	18.4	4.9	11.2	16.1	9.6	8.3
Elementary service workers	2.5	0.1	1.0	1.1	1.3	0.6
<b>Labourers and related workers</b>	<b>21.9</b>	<b>12.0</b>	<b>8.0</b>	<b>20.0</b>	<b>11.4</b>	<b>10.3</b>
Cleaners	4.3	1.6	3.1	4.6	2.2	2.4
Factory labourers	5.9	4.2	1.4	5.5	3.1	2.8
Other labourers and related workers	11.6	6.2	3.6	9.8	6.0	5.0
<b>Total employed</b>	<b>192.1</b>	<b>109.2</b>	<b>85.2</b>	<b>194.3</b>	<b>100.0</b>	<b>100.0</b>

<sup>1</sup> For explanation of terms and concepts, refer to *Labour Force, Australia*, ABS catalogue number 6203.0. (Source: Labour Force Estimates—unpublished data.)

## 9

### EMPLOYED WAGE AND SALARY EARNERS, SECTOR AND INDUSTRY<sup>1</sup>: **Original**

Industry	Employees, May 1999			Percentage distribution	
	Private No. ('000)	Public No. ('000)	Private and public No. ('000)	May 1998	May 1999
Agriculture, forestry, & fishing	n.a.	0.6	0.6	0.4	0.4
Mining	1.2	—	1.2	0.9	0.7
Manufacturing	22.4	0.1	22.5	13.9	13.9
Electricity, gas & water, Construction	5.0	2.0	7.0	4.1	4.3
Wholesale & Retail trade	36.7	—	36.8	21.2	22.8
Accommodation, cafes & restaurants	11.2	—	11.3	6.5	7.0
Transport & storage	4.9	0.8	5.7	3.3	3.5
Communication services	0.3	1.8	2.1	1.5	1.3
Finance, insurance, Property & business services	13.2	0.8	14.1	9.9	8.7
Education	3.1	14.7	17.8	11.6	11.0
Government administration and defence	—	9.6	9.6	6.1	5.9
Health and community services	14.4	8.7	23.0	15.4	14.3
Cultural, recreational, Personal and other services	7.1	2.5	9.8	5.2	6.1
<b>Total all industries</b>	<b>119.7</b>	<b>41.8</b>	<b>161.4</b>	<b>100.0</b>	<b>100.0</b>

<sup>1</sup> For explanation of terms and concepts, refer to *Employed Wage and Salary Earners, Australia*, catalogue number 6248.0.  
(Source: *Employed Wage and Salary Earners*, ABS catalogue number 6248.0.)

## 10

### AVERAGE HOURS WORKED: **Original**

Month	Average weekly total hours worked, all employed persons <sup>1</sup>		
	Males	Females	Persons
<b>1998</b>			
May	39.1	27.5	34.1
August	38.3	27.0	33.4
November	38.1	27.1	33.3
<b>1999</b>			
February	36.7	25.6	31.8
May	38.8	28.0	34.0
August	39.2	28.1	34.3

<sup>1</sup> For explanation of terms and concepts, refer to *Labour Force, Australia*, ABS catalogue number 6203.0.  
(Source: *Unpublished data*.)



## 11 JOB VACANCIES<sup>1, 2</sup>: Original

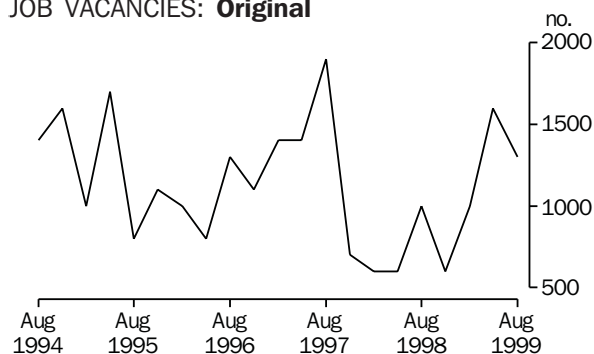
Period	Number '000	Rate <sup>3</sup> %
<b>1998</b>		
May	0.6	0.4
August	1.0	0.7
November	0.6	0.4
<b>1999</b>		
February	1.0	0.7
May	1.6	1.2
August	1.3	1.0

<sup>1</sup> For explanation of terms and concepts refer to *Job Vacancies Australia*, catalogue number 6354.0.

<sup>2</sup> Care should be exercised in using these series as some estimates are subject to high sampling variability.

<sup>3</sup> Job vacancies are expressed as a percentage of the number of job vacancies divided by the number of employees plus job vacancies.

### JOB VACANCIES: Original



## 12 INDUSTRIAL DISPUTES<sup>1</sup>: Original

Month	Working days lost '000	Twelve months ended	Working days lost per thousand employees no.
<b>1998</b>			
August	1.3	August	18
September	0.3	September	18
October	—	October	17
November	0.3	November	18
December	0.2	December	19
<b>1999</b>			
January	—	January	19
February	—	February	19
March	—	March	19
April	—	April	16
May	0.1	May	15
June	—	June	14
July	—	July	14
August	0.1	August	6
<b>Twelve months ended 1999</b>			
August	1.0		

<sup>1</sup> For explanation of terms and concepts, refer to *Industrial Disputes, Australia*, ABS catalogue number 6321.0.

## 13

AVERAGE WEEKLY EARNINGS OF EMPLOYEES<sup>1</sup>: Original and trend

Survey reference period	Full-time adult males		All males	Full-time adult females		All females	Full-time adult persons		All employees
	Weekly ordinary time earnings	Weekly total earnings	Weekly total earnings	Weekly ordinary time earnings	Weekly total earnings	Weekly total earnings	Weekly ordinary time earnings	Weekly total earnings	Weekly total earnings
	\$	\$	\$	\$	\$	\$	\$	\$	\$
ORIGINAL									
<b>1998</b>									
May	727.60	778.60	667.20	605.20	615.20	400.40	686.60	723.90	533.60
August	732.50	769.30	652.20	613.40	626.20	418.90	692.00	720.60	536.10
November	738.50	783.70	672.90	621.30	637.00	407.70	699.30	734.70	537.00
<b>1999</b>									
February	747.40	803.10	696.30	619.90	632.20	422.50	705.10	746.40	560.50
May	731.90	771.20	657.80	613.70	625.30	421.00	692.00	722.00	539.60
August	749.70	778.50	660.50	619.10	629.90	420.70	703.60	726.10	537.60
TREND <sup>2</sup>									
<b>1998</b>									
May	733.80	774.90	663.60	608.10	620.50	405.60	691.30	722.70	534.10
August	735.00	780.30	668.40	615.70	628.90	410.90	695.20	729.60	538.90
November	736.60	784.50	673.00	617.80	631.20	414.80	697.00	733.40	543.30
<b>1999</b>									
February	739.30	785.60	673.50	617.10	630.10	417.70	698.00	733.30	545.20
May	742.80	783.70	670.90	618.00	630.10	421.10	700.20	731.40	545.30
August	747.80	780.70	667.60	620.90	632.40	424.70	704.40	729.50	544.20

<sup>1</sup> For explanation of terms and concepts, refer to *Average Weekly Earnings, States and Australia*, ABS catalogue number 6302.0.

<sup>2</sup> ABS Trend estimates for the most recent months are revised, see Notes on page 2.  
(Source: *Average Weekly Earnings, States and Australia*, ABS catalogue number 6302.0.)

## 14

INDEXES OF TOTAL HOURLY RATES OF PAY (EXCLUDING BONUSES)<sup>1</sup>: Original  
(Base of each index: September Quarter 1997 = 100.0)

Industry <sup>2</sup> or occupation	Index numbers				% change				
					Sep Qtr 1998 to Dec Qtr 1998	1998	Dec Qtr '98 to Mar Qtr '99	1998	Mar Qtr '99 to Jun Qtr '99
	Sept Qtr 1998	Dec Qtr 1998	Mar Qtr 1999	Jun Qtr 1999	to Dec Qtr 1998	1998	to Mar Qtr '99	1998	to Jun Qtr '99
SELECTED INDUSTRIES									
Manufacturing	102.3	102.5	104.7	104.8	0.2		2.1		0.1
Retail trade	102.2	103.1	103.7	104.1	0.9		0.6		0.4
Transport & storage	103.3	103.7	104.9	105.4	0.4		1.2		0.5
Finance & insurance	102.3	102.9	103.3	n.a.	0.6		0.4		n.a.
Government admin. & defence	101.2	102.1	102.7	103.2	0.9		0.6		0.5
Education	104.5	105.2	105.5	105.7	0.7		0.3		0.2
Health and community services	100.8	101.4	102.6	103.2	0.6		1.2		0.6
<b>All industries<sup>3</sup></b>	<b>102.4</b>	<b>102.9</b>	<b>103.9</b>	<b>104.6</b>	<b>0.5</b>		<b>1.0</b>		<b>0.7</b>
OCCUPATION									
Professionals	103.0	103.9	104.7	105.1	0.9		0.8		0.4
Associate professionals	103.0	103.4	104.3	104.9	0.4		0.9		0.6
Tradespersons & related workers	102.4	102.5	104.0	104.3	0.1		1.5		0.3
Intermediate clerical, sales & service workers	101.9	102.7	103.7	103.9	0.8		1.0		0.2
Intermediate production & transport workers	102.4	102.8	104.3	105.0	0.4		1.5		0.7
Elementary clerical, sales & service workers	103.3	103.8	105.0	105.2	0.5		1.2		0.2
Labourers & related workers	101.1	101.7	103.2	103.6	0.6		1.5		0.4
<b>All occupations</b>	<b>102.4</b>	<b>102.9</b>	<b>103.9</b>	<b>104.6</b>	<b>0.5</b>		<b>1.0</b>		<b>0.7</b>

<sup>1</sup> These indexes are a measure of quarterly changes in wage and salary costs for employee jobs. They were compiled for the first time for the December quarter 1997. They are one of four sets of indexes that together comprise the Wage Cost Index.

For explanation of terms and concepts, refer to *Wage Cost Index, Australia*, ABS catalogue number 6345.0.

<sup>2</sup> Industry is shown at the ANZSIC division level for selected divisions.

<sup>3</sup> Excludes Agriculture, Forestry and Fishing.

(Source: ABS unpublished data.)

# 15

## SUMMARY OF ANNUAL MOVEMENTS IN WAGES AND PRICES<sup>1</sup>: Original

Period	CPI. All groups Hobart	Price index of materials used in house building. All groups, Hobart <sup>2</sup>	Price index of materials used in building other than house building. All groups, Hobart <sup>2</sup>	Average weekly total earnings, full-time adult employees <sup>3</sup>
PERCENTAGE CHANGE FROM PREVIOUS YEAR				
1996-97	1.5	-0.5	1.0	4.6
1997-98	-0.1	0.7	0.9	5.1
1998-99	1.0	1.0	0.9	2.4
<b>1997</b>				
September	-0.4	-0.2	0.6	6.7
December	-0.1	0.7	0.9	4.6
<b>1998</b>				
March	-0.3	0.9	1.0	4.3
June	0.6	1.6	1.2	4.9
September	1.8	1.8	1.6	3.3
December	1.2	1.4	1.2	3.3
<b>1999</b>				
March	0.5	0.7	0.7	3.4
June	0.4	-0.1	0.2	-0.3
September	0.4	-0.3	0.1	0.8

<sup>1</sup> Weekly award rates of pay collection has been discontinued from June 1997.

<sup>2</sup> Only quarterly data collected from June 1997. Earlier data has been re-compiled from monthly to quarterly.

<sup>3</sup> March, June, September and December data relates to February, May, August and November survey dates as published in 6302.0.

(Sources: Consumer Price Index, ABS catalogue number 6401.0; Price Index of Materials Used in House Building, ABS catalogue number 6408.0, (quarterly from June 1997); Price Index of Materials Used in Other than House Building, ABS catalogue number 6407.0, (quarterly from June 1997); Average Weekly Earnings, States and Australia, ABS catalogue number 6302.0)

# 16

## HOUSE PRICE INDEX NUMBERS<sup>1</sup>, HOBART: Original (Base of each Index: 1989-90 = 100.0)

	Established house price index		Project home price index	
	Index	% change <sup>2</sup>	Index	% change <sup>2</sup>
1996-97	128.5	-1.0	123.3	-0.1
1997-98	125.4	-2.4	123.3	—
1998-99	123.2	-1.8	123.3	—
<b>1997</b>				
June	124.9	-4.2	123.3	—
September	123.5	-1.1	123.3	—
December	123.9	0.3	123.3	—
<b>1998</b>				
March	129.5	4.5	123.3	—
June	124.8	-3.6	123.3	—
September	123.8	-0.8	123.3	—
December	121.7	-1.7	123.3	—
<b>1999</b>				
March	123.7	1.6	123.3	—
June	123.6	-0.1	123.3	—

<sup>1</sup> Used in calculating the mortgage interest charges component of the Consumer Price Index.

<sup>2</sup> Percentage change over previous period.

(Source: House Price Indexes: Eight Capital Cities, ABS catalogue number 6416.0)

## 17

CONSUMER PRICE INDEX, HOBART AND EIGHT CAPITAL CITIES COMBINED<sup>1,2</sup>; **Original**

(Base of each index: year 1989–90 = 100.0)

Period	Hobart					
	Food	Clothing	Housing	Household equipment and operation	Transportation	Alcohol and tobacco
<b>1996</b>						
September	120.0	105.9	107.4	119.1	119.7	153.7
December	120.6	105.6	104.8	119.4	121.8	152.7
<b>1997</b>						
March	120.7	105.7	101.9	120.1	122.8	153.1
June	121.0	105.3	98.4	120.1	121.7	153.5
September	121.0	104.8	97.7	119.7	122.2	153.6
December	121.7	106.0	95.5	119.7	122.1	155.6
<b>1998</b>						
March	121.7	105.5	95.3	119.4	121.7	158.0
June	122.3	105.3	95.5	119.5	120.5	160.2
September	124.7	105.1	95.6	120.4	120.4	159.6
December	125.0	105.7	95.4	120.8	118.6	159.1
<b>1999</b>						
March	125.5	104.7	95.8	119.5	118.4	161.5
June	126.8	104.6	95.9	119.4	120.4	160.0
September	126.3	104.5	96.9	119.3	123.1	158.1

Period	Hobart				Weighted average of eight capital cities	
	Health and personal care	Recreation and education	Index, all groups	% change over previous period, all groups	Index	% change over previous period
<b>1996</b>						
September	154.1	115.1	121.1	0.4	120.1	0.3
December	154.8	116.8	121.3	0.2	120.3	0.2
<b>1997</b>						
March	159.4	120.5	121.9	0.5	120.5	0.2
June	162.6	119.2	121.3	-0.5	120.2	-0.2
September	153.0	119.2	120.6	-0.6	119.7	-0.4
December	160.9	120.6	121.2	0.5	120.0	0.3
<b>1998</b>						
March	162.7	121.7	121.5	0.2	120.3	0.3
June	166.1	122.6	122.0	0.4	121.0	0.6
September	171.5	122.5	122.8	0.7	121.3	0.2
December	169.5	124.2	122.7	-0.1	121.9	0.5
<b>1999</b>						
March	154.4	125.2	122.1	-0.5	121.8	-0.1
June	154.9	124.9	122.5	0.3	122.3	0.4
September	160.7	125.6	123.3	0.7	123.4	0.9

<sup>1</sup> Further information on construction of CPI indexes is contained in the bulletin *The Australian Consumer Price Index Concepts, Sources and Methods* (Catalogue No. 6461.0).

<sup>2</sup> The CPI is now published on a reference base of 1989–90 = 100.0. (Source: *Consumer Price Index*, ABS catalogue number 6401.0.)

# 18

## PRICE INDEX OF MATERIALS USED IN BUILDING OTHER THAN HOUSE BUILDING, HOBART<sup>1</sup>: **Original**

(Base year: 1989–90 = 100.0)

### *Index numbers for selected major building materials*

<i>Period</i>	<i>Structural timber</i>	<i>Clay bricks</i>	<i>Ready mixed concrete</i>	<i>Precast concrete products</i>	<i>Steel decking, cladding etc.</i>	<i>Structural steel</i>
1996–97	110.3	125.3	116.2	132.2	115.0	126.2
1997–98	108.9	129.0	118.0	131.5	117.8	127.2
1998–99	109.1	130.8	119.5	131.6	110.8	128.0
<b>1997</b>						
September	107.5	127.9	114.9	131.2	118.9	126.9
December	106.6	129.4	116.8	131.2	118.9	127.1
<b>1998</b>						
March	109.2	129.4	120.4	131.7	118.9	127.4
June	112.4	129.4	119.9	131.7	114.3	127.4
September	109.4	130.2	119.2	131.7	111.3	127.7
December	108.9	131.1	120.6	131.7	111.3	128.1
<b>1999</b>						
March	108.9	131.1	120.4	131.5	110.3	128.1
June	109.2	130.8	117.9	131.5	110.3	128.1
September	108.2	126.9	119.4	131.6	113.7	128.8

### *Index numbers for selected major building materials*

<i>Period</i>	<i>Reinforcing steel bar, fabric and mesh</i>	<i>Aluminium windows</i>	<i>Fabricated steel products</i>	<i>Builders' hardware</i>	<i>Sand &amp; aggregate</i>	<i>Paint &amp; other coatings</i>	<i>Non-ferrous pipes &amp; fittings</i>
1996–97	110.7	105.9	113.3	117.2	132.7	126.6	165.2
1997–98	112.7	107.2	114.7	113.7	124.5	127.3	164.3
1998–99	113.4	107.3	116.0	113.4	127.9	133.3	161.2
<b>1997</b>							
September	110.9	106.8	114.0	115.3	121.4	124.6	168.5
December	113.0	106.8	114.0	112.5	121.4	123.5	163.0
<b>1998</b>							
March	113.5	106.8	114.8	112.8	127.5	130.5	162.9
June	113.4	108.4	116.1	114.0	127.5	130.7	162.6
September	113.4	108.4	116.1	113.7	127.9	132.7	162.8
December	113.3	106.7	116.1	113.9	127.9	133.9	160.2
<b>1999</b>							
March	113.4	106.9	116.1	114.8	127.9	134.2	161.4
June	113.4	107.0	115.6	111.3	127.9	132.5	160.2
September	113.4	107.0	116.1	110.8	135.4	131.7	162.4

<sup>1</sup> Index numbers in this table have been recompiled to reflect the change to a quarterly collection basis from June 1997. (Source: *Price Index of Materials Used in Other than House Building*, ABS catalogue number 6407.0.)

*continued*

## 18

PRICE INDEX OF MATERIALS USED IN BUILDING OTHER THAN HOUSE BUILDING, HOBART<sup>1</sup>: **Original**—continued  
(Base year: 1989–90 = 100.0)

Period	<i>All electrical materials</i>		<i>All mechanical services</i>		<i>All plumbing materials</i>	
	Index	% change over previous period	Index	% change over previous period	Index	% change over previous period
1996–97	117.4	-1.0	117.0	1.7	122.8	-3.8
1997–98	117.2	-0.2	117.0	—	121.9	-0.7
1998–99	115.8	-1.2	119.0	1.7	124.5	2.1
<b>1997</b>						
September	117.6	0.1	116.6	-0.4	122.8	0.2
December	117.8	0.2	116.8	0.2	122.0	-0.7
<b>1998</b>						
March	116.9	-0.8	117.4	0.5	121.6	-0.3
June	116.5	-0.3	117.1	-0.3	121.0	-0.5
September	116.1	-0.3	117.8	0.6	124.9	3.2
December	116.8	0.6	119.1	1.1	124.1	-0.6
<b>1999</b>						
March	115.2	-1.4	119.4	0.3	124.4	0.2
June	115.2	—	119.5	0.1	124.5	0.1
September	115.9	0.6	119.3	-0.2	122.3	-1.8
		<i>All groups excluding electrical materials and mechanical services</i>		<i>All groups</i>		
Period	Index	% change over previous period	Index	% change over previous period		
1996–97	116.8	1.1	116.3	1.0		
1997–98	118.0	1.0	117.4	0.9		
1998–99	118.8	0.7	118.5	0.9		
<b>1997</b>						
September	117.1	-0.2	116.5	-0.2		
December	117.7	0.5	117.2	0.6		
<b>1998</b>						
March	118.2	0.4	117.7	0.4		
June	118.9	0.6	118.1	0.3		
September	119.1	0.2	118.4	0.3		
December	119.0	-0.1	118.6	0.2		
<b>1999</b>						
March	118.8	-0.2	118.5	-0.1		
June	118.4	-0.3	118.3	-0.2		
September	118.8	0.3	118.5	0.2		

<sup>1</sup> Index numbers in this table have been recomputed to reflect the change to a quarterly collection basis from June 1997.  
(Source: *Price Index of Materials Used in Other than House Building*, ABS catalogue number 6407.0.)

# 19

## PRODUCTION OF SELECTED COMMODITIES: Original

Year or month	Dairy products <sup>1</sup>			Staff-hours worked	
	Whole milk <sup>2</sup>	Factory butter <sup>3</sup>	Factory cheese	Textile manufacturing <sup>4</sup>	Vegetable preserving
	million litres	tonnes	tonnes	'000	'000
1996-97	529.4	10 869	25 398	1 349	1 534
1997-98	542.8	8 745	26 835	1 125	1 128
1998-99	603.4	11 546	29 946	1 061	1 084
<b>1998</b>					
September	58.1	937	2 849	98	75
October	81.0	1 157	4 084	105	83
November	81.8	1 414	4 379	94	103
December	77.2	1 565	4 088	83	103
<b>1999</b>					
January	66.1	1 068	3 398	42	51
February	50.5	940	2 675	90	86
March	54.0	985	2 907	96	96
April	44.3	992	2 351	82	90
May	35.1	1 180	978	88	110
June	19.6	501	1 185	98	99
July	13.6	258	528	79	78
August	25.2	514	596	94	97
September	n.y.a.	n.y.a.	n.y.a.	96	62
Year or month (quarterly for electricity)	Newsprint <sup>5</sup>	Refined zinc	Metal. refin.	Electricity <sup>7</sup>	
	'000 tonnes	'000 tonnes	Index <sup>6</sup>	million kW.h	
1996-97	232.7	207.7	116.1	9 543	
1997-98	n.p.	197.0	116.6	9 700	
1998-99	n.p.	214.3	125.0	9 910	
<b>1998</b>					
September	n.p.	17.3	119.6	(Sept qtr) 2 660	
October	n.p.	18.1	126.3	..	
November	n.p.	16.2	123.5	..	
December	n.p.	17.3	116.0	(Dec qtr) 2 420	
<b>1999</b>					
January	n.p.	17.8	126.2	..	
February	n.p.	15.2	114.1	..	
March	n.p.	17.4	124.6	(Mar. qtr) 2 260	
April	n.p.	19.1	132.0	..	
May	n.p.	19.8	133.9	..	
June	n.p.	19.4	133.6	(June qtr) 2 570	
July	n.p.	18.8	133.8	..	
August	n.p.	20.7	138.2	..	
September	n.p.	19.1	130.2	(Sept qtr) 2 680	

<sup>1</sup> Source: Australian Dairy Corporation.

<sup>2</sup> Includes the whole milk equivalent of farm cream intake.

<sup>3</sup> Includes butter equivalent of butter oil.

<sup>4</sup> Includes spinning, weaving and carpet making. Reported by establishments which manufacture textiles only, or manufacture clothing and textiles in the one plant.

<sup>5</sup> Excludes production of directory newsprint and high grade specialty paper.

<sup>6</sup> Metallurgical refining index (Base: 1979-80 = 100.0) Output from selected establishments covering the smelting and refining of ferro-alloys, zinc and aluminium. The weighting pattern is based on the establishments' value added as derived from the 1979-80 Manufacturing Census. For multi-product establishments, value added was apportioned to products on the basis of gross receipts from each product.

<sup>7</sup> Collected on a quarterly basis as from 1997.

(Source: ABS unpublished data.)

## 20

LIVESTOCK SLAUGHTERING: **Original**

Year or month	Cattle			Sheep	Lambs	Pigs
	Bulls, bullocks and steers	Cows and heifers	Calves			
	'000	'000	'000			
1996-97 r	109.4	93.2	43.5	367.7	358.2	73.3
1997-98 r	93.4	123.6	53.9	461.0	423.3	78.1
1998-99	94.8	116.3	61.0	439.9	480.1	81.2
<b>1997</b>						
September r	5.3	4.9	20.4	18.0	23.1	5.4
<b>1998</b>						
September r	5.8	8.2	26.0	19.8	43.0	6.9
October r	7.0	7.3	7.4	22.4	31.8	6.2
November r	7.0	8.6	1.0	41.3	30.5	5.3
December r	8.4	12.1	0.3	54.4	41.0	8.0
<b>1999</b>						
January r	7.6	9.9	0.1	53.0	45.0	4.8
February r	8.1	11.0	0.2	58.9	44.1	5.2
March r	7.3	10.0	0.5	44.4	45.8	8.5
April r	8.9	11.3	1.9	36.4	44.4	6.8
May r	9.4	11.2	1.6	33.6	39.6	6.4
June r	10.2	11.0	1.0	40.5	43.8	8.8
July r	10.1	8.7	2.2	36.6	39.8	6.6
August r	8.4	6.0	26.7	24.8	38.6	6.5
September	8.0	6.6	27.2	24.3	32.0	6.9

(Source: ABS unpublished data.)

## 21

LIVESTOCK SLAUGHTERING: **Seasonally adjusted<sup>1</sup> and trend<sup>2</sup>**

Month	Seasonally adjusted			Trend		
	Cattle and calves	Sheep and lambs	Pigs	Cattle and calves	Sheep and lambs	Pigs
	'000	'000	'000	'000	'000	'000
<b>1997</b>						
September r	20.2	69.4	6.0	22.6	76.1	6.4
<b>1998</b>						
September r	26.1	90.4	6.9	23.5	77.9	6.9
October r	21.2	71.6	6.6	23.0	79.1	6.6
November r	21.3	76.8	6.5	22.4	79.1	6.3
December r	22.3	77.5	6.5	22.0	78.1	6.2
<b>1999</b>						
January r	21.6	77.1	5.1	21.7	76.3	6.3
February r	22.4	81.5	6.0	21.6	74.3	6.4
March r	21.9	72.1	8.1	21.8	73.9	6.6
April r	22.3	70.6	6.8	22.2	75.6	6.8
May r	22.0	73.1	6.6	22.9	79.2	6.9
June r	23.1	81.4	7.3	24.0	84.4	6.9
July r	24.4	92.4	5.7	25.1	89.7	6.9
August r	30.0	115.5	7.8	26.2	94.2	6.8
September	25.8	82.8	6.6	27.1	98.1	6.7

<sup>1</sup> Seasonally adjusted factors are reviewed annually to take account of each additional year's original data. The results of the review are used to compile revised seasonally adjusted and trend estimates; see Notes page 2.

<sup>2</sup> ABS trend estimates for the most recent months are revised; see Notes page 2.  
(Source: ABS unpublished data.)



## 22 MEAT PRODUCTION<sup>1</sup>: Original

Year or month	Beef	Veal	Mutton	Lamb	Pigmeat <sup>2</sup>	Total
	tonnes	tonnes	tonnes	tonnes	tonnes	tonnes
1996-97 r	51 506	905	7 820	6 767	4 833	71 826
1997-98 r	53 061	1 148	9 840	8 072	4 915	77 042
1998-99 r	53 273	1 242	8 725	9 223	5 241	77 701
<b>1997</b>						
September r	2 478	412	365	436	345	4 037
<b>1998</b>						
September r	3 361	512	365	823	442	5 503
October r	3 557	150	422	604	393	5 125
November r	4 124	23	804	581	340	5 871
December r	5 213	9	1 085	777	490	7 574
<b>1999</b>						
January r	4 323	5	1 059	861	302	6 550
February r	4 910	6	1 203	837	335	7 290
March r	4 467	14	891	876	547	6 795
April r	5 171	44	735	885	452	7 287
May r	5 340	36	666	771	420	7 232
June r	5 561	21	802	851	584	7 819
July r	5 086	46	722	775	439	7 067
August r	3 907	520	489	777	396	6 089
September	3 897	524	480	621	439	5 961

<sup>1</sup> Carcass weight.

<sup>2</sup> Includes pork used for production of bacon and ham.

(Source: ABS unpublished data.)

## 23 PRINCIPAL MINERAL CONCENTRATES PRODUCED: Original

Year or quarter	Copper	Iron (pellets)	Lead	Lead- zinc	Tin	Zinc
	'000 tonnes	'000 tonnes	'000 tonnes	'000 tonnes	'000 tonnes	'000 tonnes
1996-97	99.7	809.4	101.4	38.0	16.3	356.9
1997-98	109.6	1 074.7	84.6	26.2	16.2	335.4
1998-99	76.8	4 073.4	101.8	12.6	12.5	382.3
<b>1997</b>						
June	24.2	—	23.0	6.4	4.6	93.3
September	27.2	—	22.5	5.4	4.8	88.6
December	28.5	164.5	22.1	6.7	3.7	87.3
<b>1998</b>						
March	26.1	253.8	21.9	8.2	3.3	79.4
June	27.8	656.4	18.1	6.0	4.4	80.1
September	25.8	1 109.7	21.5	5.6	1.3	92.0
December	29.9	1 597.9	26.1	3.2	4.0	95.3
<b>1999</b>						
March	11.0	481.2	29.5	2.5	3.7	97.1
June	10.0	884.6	24.7	1.5	3.6	98.0

(Source: Mineral Resources Tasmania, Department of Infrastructure, Energy and Resources.)

## 24

SAWMILLS AND PLYWOOD MILLS, LOGS DELIVERED AND TIMBER PRODUCED: **Original**

Year or quarter	Tasmanian-grown logs delivered					Sawn, peeled and sliced timber produced <sup>1</sup>				
	Eucalypts	Hardwoods, excluding eucalypts <sup>2</sup>	Plantation <sup>3</sup> softwoods	Native softwoods <sup>4</sup>	Total	Eucalypts	Hardwoods, excluding eucalypts <sup>2</sup>	Plantation <sup>3</sup> softwoods	Native softwoods <sup>4</sup>	Total
		'000 m <sup>3</sup>	'000 m <sup>3</sup>	'000 m <sup>3</sup>			'000 m <sup>3</sup>	'000 m <sup>3</sup>	'000 m <sup>3</sup>	
1996-97	500.8	17.0	352.9	1.2	871.9	165.8	4.3	158.0	0.5	328.5
1997-98	496.8	24.3	357.7	1.6	880.3	171.1	5.3	167.3	0.4	344.2
1998-99	499.9	22.6	351.9	1.0	875.4	159.7	5.1	169.7	0.3	334.8
<b>1997</b>										
September	139.5	2.7	98.3	0.3	240.9	52.4	1.5	42.3	0.1	96.3
December	123.4	3.1	73.4	0.2	200.2	45.3	1.0	41.2	0.1	87.6
<b>1998</b>										
March	105.0	13.8	99.5	0.3	218.6	32.4	1.2	44.6	0.1	78.3
June	128.9	4.6	86.5	0.6	220.6	41.1	1.6	39.1	0.1	81.9
September	129.9	3.8	88.7	0.2	222.7	43.9	1.4	41.5	—	86.8
December	134.6	2.9	81.3	0.2	218.9	40.8	1.2	42.5	0.1	84.7
<b>1999</b>										
March	110.8	9.7	90.7	0.2	211.4	35.4	0.8	42.6	—	78.9
June	124.6	6.1	91.3	0.3	222.3	39.6	1.7	43.1	0.1	84.5
September	136.0	6.3	109.4	0.2	252.0	46.2	1.3	49.1	0.1	96.8

<sup>1</sup> Includes plywood, veneer and sliced timber production converted to an equivalent cubic measurement.

<sup>2</sup> Includes blackwood, myrtle, sassafras etc.

<sup>3</sup> Radiata pine.

<sup>4</sup> Includes Huon pine, celery top pine and King William pine.

(Source: ABS unpublished data.)

## 25

CHIPPING AND GRINDING OF WOOD<sup>1</sup>: **Original**

Year or quarter	Producing locations <sup>2</sup>	Materials used <sup>3</sup>		
		Logs delivered <sup>4</sup>	Sawmill offcuts	Chipped and ground wood production
		'000 m <sup>3</sup>	'000 m <sup>3</sup>	('000 tonnes green weight)
1996-97	27	3 207.4	433.2	3 609.3
1997-98	28	3 998.1	457.9	4 440.1
1998-99	29	3 459.6	373.4	3 929.9
<b>1997</b>				
September	27	936.1	106.8	1 064.1
December	28	999.2	113.6	1 100.1
<b>1998</b>				
March	28	1 014.7	116.6	1 157.7
June	28	1 048.0	120.9	1 118.3
September	29	872.5	87.3	981.5
December	29	798.3	112.0	889.5
<b>1999</b>				
March	29	862.9	79.2	997.7
June	29	925.9	94.9	1 061.1
September	30	1 056.8	134.1	1 225.4

<sup>1</sup> Both hardwoods and softwoods, separate details are not available.

<sup>2</sup> Capable of producing at end of year or actually producing during quarter.

<sup>3</sup> Data reported by weight, converted to cubic measure by the factor 0.95 m<sup>3</sup> per tonne.

<sup>4</sup> Includes log equivalent of limewood and billets.

(Source: ABS unpublished data.)

# 26

## LOGS DELIVERED FOR MILLING OR CHIPPING: **Original**

Year or quarter	Sawmilling and plywood milling			Chipping and grinding <sup>1</sup>			Total		
	Crown land <sup>2</sup>	Private land	Total	Crown land <sup>2</sup>	Private land	Total	Crown land <sup>2</sup>	Private land	Total
	'000 m <sup>3</sup>	'000 m <sup>3</sup>	'000 m <sup>3</sup>	'000 m <sup>3</sup>	'000 m <sup>3</sup>	'000 m <sup>3</sup>	'000 m <sup>3</sup>	'000 m <sup>3</sup>	'000 m <sup>3</sup>
1996-97	725.6	146.4	871.9	1 627.4	1 580.0	3 207.4	2 353.0	1 726.3	4 079.3
1997-98	750.7	129.6	880.3	1 894.9	2 103.1	3 998.1	2 645.7	2 232.7	4 878.3
1998-99	754.2	121.2	875.4	1 562.6	1 897.0	3 459.6	2 316.7	2 018.2	4 334.9
<b>1997</b>									
September	201.0	39.8	240.9	464.9	471.2	936.1	665.9	511.0	1 177.0
December	166.6	33.6	200.2	485.0	514.3	999.2	651.5	547.9	1 199.4
<b>1998</b>									
March	191.9	26.7	218.6	466.6	548.1	1 014.7	658.5	574.9	1 233.3
June	191.2	29.4	220.6	478.5	569.5	1 048.0	669.7	598.9	1 268.6
September	188.3	34.3	222.7	341.0	531.5	872.5	529.4	565.8	1 095.2
December	185.5	33.4	218.9	422.4	375.9	798.3	607.9	409.3	1 017.2
<b>1999</b>									
March	184.1	27.3	211.4	367.0	495.8	862.9	551.1	523.2	1 074.3
June	196.2	26.1	222.3	432.1	493.8	925.9	628.3	519.9	1 148.2
September	221.8	30.2	252.0	554.0	502.7	1 056.8	775.8	532.9	1 308.7

<sup>1</sup> Logs used are generally below sawmilling standard; includes log equivalent of limbwood and billets.

<sup>2</sup> Comprises all areas (including concession areas) from which royalties are payable to Forestry Tasmania.  
(Source: ABS unpublished data.)

## 27 BUILDING APPROVALS: Original

Year or month	Dwelling units				Value				
	New houses	New other residential buildings <sup>1</sup>	Other dwell. units created (conversions etc.) <sup>2</sup>	Total dwelling units	New dwelling units	Alterations and additions to residential buildings <sup>3</sup>	Non-residential building <sup>4</sup>		Total of all building
no.	no.	no.	no.	\$'000	\$'000	\$'000	Private	Total	\$'000
1996-97	1 593	251	17	1 861	157 428	35 323	121 490	158 970	351 720
1997-98	1 419	219	5	1 643	142 366	38 432	82 734	125 466	306 264
1998-99	1 297	104	9	1 410	131 241	36 795	115 752	174 545	342 580
<b>1998</b>									
September	129	9	1	139	12 548	3 048	8 398	8 718	24 314
October	117	21	1	139	12 498	3 001	13 874	15 424	30 923
November	97	11	—	108	9 484	2 944	6 717	7 861	20 289
December	112	2	—	114	11 366	2 910	2 378	6 664	20 940
<b>1999</b>									
January	114	3	—	117	11 264	2 818	15 875	45 841	59 923
February	97	12	—	109	10 719	2 655	4 164	4 234	17 609
March	116	9	1	126	12 077	3 092	10 237	16 463	31 632
April	110	14	2	126	12 418	3 917	23 814	26 864	43 198
May	94	—	1	95	8 517	2 678	5 303	10 122	21 317
June	76	11	1	88	8 955	3 526	5 321	7 266	19 746
July	147	9	2	158	15 197	3 728	15 315	18 702	37 627
August	101	16	1	118	11 734	3 861	8 174	10 176	25 770
September	114	2	—	116	11 635	3 294	21 277	21 327	36 257

<sup>1</sup> New individual dwelling units (e.g. flats, home units and villa units).

<sup>2</sup> From alterations and additions to residential building, conversions of non-residential building to residential building etc.

<sup>3</sup> Valued at \$10,000 and over. Includes conversions and dwelling units approved as part of alterations and additions or as part of the construction of non-residential building.

<sup>4</sup> Comprises non-residential building (new plus alterations and additions) valued at \$50,000 and over.  
(Source: *Building Approvals, Tasmania*, ABS catalogue number 8731.6.)

## 28 SECURED HOUSING COMMITMENTS<sup>1</sup>: Original, seasonally adjusted and trend

Month	Total number of dwellings <sup>2</sup>			Total value of commitments <sup>3</sup>		
	Original	Seasonally adjusted	Trend	Original	Seasonally adjusted	Trend
no.	no.	no.	\$m	\$m	\$m	
<b>1998</b>						
September	686	690	751	58	55	63
October	719	704	775	57	58	64
November	824	847	814	71	71	68
December	873	893	859	74	76	72
<b>1999</b>						
February	870	892	905	74	75	77
March	1 027	908	894	92	78	76
April	854	848	869	71	76	74
May	915	877	846	76	72	71
June	818	775	833	63	62	69
July	806	816	827	67	69	67
August	859	844	827	68	66	66
September	876	860	830	68	65	64

<sup>1</sup> New seasonal adjustment factors resulting from the annual seasonal reanalysis were introduced in the January 1998 issue.

<sup>2</sup> Includes new dwellings, established dwellings and refinancing. Excludes alterations and additions.

<sup>3</sup> Commitment is a firm offer of housing finance. It either has been, or is normally expected to be, accepted. Includes commitments to provide housing finance to employees and commitments accepted and cancelled in the same month. Excludes alterations and additions. Includes refinancing.

(Source: *Housing Finance for Owner Occupation, Australia*, ABS catalogue number 5609.0.)

Month	Deposits				
	Current bearing interest	Current – not bearing interest	Fixed	Investment savings accounts	Statement savings accounts
	\$m	\$m	\$m	\$m	\$m
<b>1998</b>					
August	737	258	1 907	644	245
September	797	245	1 919	650	249
October	776	232	1 947	653	253
November	780	238	1 864	651	252
December	773	249	1 877	653	253
<b>1999</b>					
February	805	245	1 904	655	257
March	814	260	1 926	649	266
April	801	258	1 928	638	269
May	784	255	1 921	627	270
June	773	267	1 925	624	272
July	775	248	1 964	616	273
August	783	246	1 992	614	278

Month	Deposits			
	Passbook/School savings accounts	Other	Total	Loans <sup>2</sup>
	\$m	\$m	\$m	\$m
<b>1998</b>				
August	97	87	3 974	4 866
September	95	86	4 041	4 917
October	95	85	4 041	4 858
November	96	86	3 967	4 916
December	77	88	3 969	4 907
<b>1999</b>				
January	89	88	4 008	4 879
February	88	88	4 048	4 960
March	80	89	4 084	5 018
April	87	92	4 073	5 029
May	93	92	4 042	5 080
June	92	92	4 044	5 107
July	77	105	4 058	5 081
August	89	93	4 093	4 765

<sup>1</sup> Details are the averages of weekly figures for each month. The figures are derived from returns submitted by banks authorised under the *Banking Act* together with similar returns voluntarily submitted by the State banks; they exclude the Reserve Bank.

<sup>2</sup> Excludes non-resident loans.

(Source: Reserve Bank of Australia.)

Year or quarter	Buildings and structures	Equipment, plant, and machinery	Total
	\$m	\$m	\$m
	1997–98	169	477
1998–99	130	345	475
<b>1998</b>			
June	42	102	145
September	40	101	141
December	25	70	95
<b>1999</b>			
March	30	85	115
June	35	89	124

<sup>1</sup> Estimates based on a sample survey and therefore subject to sampling variability. Covers selected industries only—mining, manufacturing, finance, property and other selected industries.

<sup>2</sup> Data revised back to June quarter 1987. See *Improvements to ABS Economic Statistics* (catalogue number 1357.0).

(Source: *State Estimates of Private New Capital Expenditure*, ABS catalogue number 5646.0.)

Period	Establish- ments no.	Guest rooms no.	Bed spaces no.	Persons employed no.	Room nights occupied '000	Room occup- ancy rate %	Guest nights '000	Bed occup- ancy rate %	Guest arrivals '000	Takings from accomm- odation \$'000
<b>LICENSED HOTELS WITH FACILITIES</b>										
<b>1998</b>										
June qtr	55	2 917	7 965	2 692	116.9	44.0	190.3	26.3	98.9	9 999
<b>1999</b>										
April	n.a.	n.a.	n.a.	n.a.	50.3	57.8	85.9	36.0	47.1	4 198
May	n.a.	n.a.	n.a.	n.a.	41.9	46.6	64.8	26.3	37.0	3 491
June	n.a.	n.a.	n.a.	n.a.	34.9	40.1	56.4	23.6	31.0	2 970
June qtr	54	2 900	7 950	2 725	127.1	48.1	207.1	28.6	115.1	10 658
<b>MOTELS AND GUEST HOUSES WITH FACILITIES</b>										
<b>1998</b>										
June qtr	52	1 739	5 366	634	70.1	44.3	127.7	26.2	72.5	5 296
<b>1999</b>										
April	n.a.	n.a.	n.a.	n.a.	31.1	59.4	60.4	37.0	33.9	2 457
May	n.a.	n.a.	n.a.	n.a.	23.3	43.0	42.0	24.9	24.9	1 739
June	n.a.	n.a.	n.a.	n.a.	17.8	33.9	32.6	19.9	19.4	1 319
June qtr	51	1 746	5 444	608	72.1	45.4	134.9	27.2	78.2	5 516
<b>SERVICED APARTMENTS</b>										
<b>1998</b>										
June qtr	24	900	3 482	380	39.0	47.6	80.9	25.5	38.7	3 722
<b>1999</b>										
April	n.a.	n.a.	n.a.	n.a.	16.0	61.9	35.5	35.0	17.2	1 679
May	n.a.	n.a.	n.a.	n.a.	12.4	46.1	23.8	22.7	12.2	1 195
June	n.a.	n.a.	n.a.	n.a.	11.1	42.7	23.5	23.1	11.5	1 078
June qtr	24	864	3 386	378	39.5	50.2	82.8	26.9	40.9	3 952
<b>TOTAL ESTABLISHMENTS</b>										
<b>1998</b>										
June qtr	131	5 556	16 813	3 706	226.0	44.7	398.9	26.1	210.1	19 018
<b>1999</b>										
April	n.a.	n.a.	n.a.	n.a.	97.4	58.9	181.9	36.1	98.1	8 334
May	n.a.	n.a.	n.a.	n.a.	77.5	45.4	130.5	25.1	74.1	6 424
June	n.a.	n.a.	n.a.	n.a.	63.7	38.5	112.5	22.3	62.0	5 367
June qtr	129	5 510	16 780	3 711	238.6	47.6	424.9	27.8	234.2	20 125

<sup>1</sup> Comprising establishments with 15 or more rooms or units. Note: The Survey of Tourist Accommodation has been substantially revised from the March quarter 1998. Information in respect of 1998 has been retabulated on the basis of the new scope; 1998 data will, therefore, differ from previously published data. For an explanation, including definitions, refer to *Tourist Accommodation*, ABS catalogue number 8635.0. (Source: *Tourist Accommodation Australia*, ABS catalogue number 8635.0. For more detailed information, see also *Tourist Accommodation, Small Area Data, Tasmania*, ABS product number 8635.6.40.001)

## 32

NATIONAL PARKS, PERSON ENTRIES<sup>1</sup>: Original

## Tasmanian National Park attendance

Month	Cradle Mountain <sup>2</sup> (Lake Dove)	Lake St Clair <sup>2</sup> (Cynthia Bay)	Freycinet <sup>2</sup>	Mt Field <sup>2</sup>	Asbestos Range <sup>3</sup> (Bakers Beach)	Mole Creek Karst <sup>4</sup> (Marakooopa Cave)	Maria Island <sup>5</sup> (Darlington)
	no.	no.	no.	no.	no.	no.	no.
<b>1998</b>							
October	13 000	7 600	17 100	8 800	2 300	2 124	1 206
November	14 000	9 300	19 900	9 800	2 700	2 508	1 176
December	21 000	11 200	28 500	14 800	3 500	4 017	1 317
<b>1999</b>							
January	32 000	20 400	48 000	29 500	6 200	4 780	2 660
February	21 000	14 100	31 900	16 500	3 400	2 330	1 305
March	20 000	14 400	27 700	16 800	2 900	2 801	1 603
April	19 000	10 900	25 700	14 600	2 700	2 560	1 465
May	9 000	4 700	14 200	6 500	1 500	1 656	751
June	8 000	3 000	11 900	5 000	1 400	1 530	556
July	8 100	2 700	10 400	4 900	1 300	1 040	22
August	7 200	2 700	9 500	6 800	1 500	1 449	436
September	14 600	6 000	14 800	7 800	1 800	2 193	1 002
October	15 300	8 700	18 200	9 200	2 600	2 080	1 070

<sup>1</sup> A 'person entry' occurs whenever a visitor enters a National Park. Measurement occurs at the designated sites in brackets.

<sup>2</sup> Estimated through a combination of traffic and booth counts.

<sup>3</sup> Estimated through traffic counts.

<sup>4</sup> Number of people taken on a guided tour.

<sup>5</sup> The sum of ferry arrivals and estimated plane passengers.

(Source: Tasmanian Parks and Wildlife Service, Department of Primary Industries, Water and Environment.)

## 33

TRACKS IN NATIONAL PARKS, WALKER REGISTRATIONS<sup>1</sup>: Original

Month <sup>2</sup>	Overland <sup>3</sup>	South Coast <sup>4</sup>	Freycinet <sup>5</sup>	Port Davey <sup>4</sup>	Frenchmans Cap
	no.	no.	no.	no.	no.
<b>1998</b>					
October	190	15	326	10	36
November	644	63	193	17	24
December	1 295	218	348	54	92
<b>1999</b>					
January	1 665	360	454	91	176
February	1 329	216	243	49	87
March	1 019	85	226	14	59
April	777	92	182	10	99
May	111	8	57	—	30
June	69	3	97	1	18
July	48	—	93	—	13
August	45	3	119	—	16
September	157	10	114	2	24
October	202	n.y.a.	196	n.y.a.	n.y.a.

<sup>1</sup> Numbers include only walkers who registered and represents their intention.

<sup>2</sup> Month of departure.

<sup>3</sup> Sum of registrations at Cradle Mt and Lake St Clair.

<sup>4</sup> Sum of registrations to walk the length of the track in any direction, irrespective of starting point.

<sup>5</sup> All overnight walkers registered in the park.

(Source: Tasmanian Parks and Wildlife Service, Department of Primary Industries, Water and Environment.)

## 34 REGISTRATIONS OF NEW MOTOR VEHICLES<sup>1</sup>: Original

Year or month	Passenger vehicles	Other vehicles <sup>2</sup>	Total (excl. motor cycles)	Vehicles registered by vehicle rental businesses <sup>3</sup>	Motor cycles
	no.	no.	no.	no.	no.
1996	11 445	2 728	14 173	2 384	472
1997	12 512	2 606	15 118	2 458	518
1998	12 857	2 848	15 705	1 830	567
<b>1998</b>					
September	1 280	216	1 496	408	44
October	1 015	218	1 233	134	56
November	1 101	223	1 324	194	68
December	1 556	217	1 773	712	63
<b>1999</b>					
January	777	199	976	5	56
February	741	187	928	23	48
March	985	242	1 227	20	45
April	879	219	1 098	—	45
May	838	275	1 113	2	35
June	859	270	1 129	16	28
July	1 059	290	1 349	171	53
August	1 026	244	1 270	235	29
September	1 240	218	1 458	470	42

<sup>1</sup> Includes State and Commonwealth Government-owned motor vehicles other than those belonging to the defence services. Excludes tractors, plant and equipment, caravans and trailers.

<sup>2</sup> Comprises utilities, panel vans, rigid and articulated trucks and other truck-type vehicles (i.e. motor vehicles designed for purposes other than freight carrying, e.g. campervans, tow trucks, ambulances and hearses) and buses.

<sup>3</sup> These figures are included in previous columns.

(Source: *Motor Vehicle Registrations Australia*, ABS catalogue number 9301.0. ABS unpublished data.)

## 35 TURNOVER OF RETAIL ESTABLISHMENTS AT CURRENT PRICES<sup>1</sup>: Original and trend

Period	Original \$m	Trend estimates <sup>2</sup>	
		\$m	Change from corresponding month of previous year %
<b>1998</b>			
September	245.9	257.1	-3.2
October	261.3	257.5	-3.2
November	264.0	258.8	-2.4
December	340.7	261.0	-0.9
<b>1999</b>			
January	262.2	263.7	1.0
February	243.4	266.0	2.7
March	268.7	267.4	3.8
April	261.2	267.9	4.3
May	255.5	267.9	4.4
June	251.0	268.2	4.4
July	261.8	269.1	4.7
August	256.6	270.5	5.2
September	260.8	271.7	5.7

<sup>1</sup> The data in this table have been adjusted following an improvement to the coverage of the Retail frame.

<sup>2</sup> Trend estimates for the most recent months have been revised. See Notes on page 2.

(Source: *Retail Trade, Australia*, ABS Catalogue number 8501.0)



## 36

VALUE OF OVERSEAS TRADE<sup>1</sup>, TASMANIA AND AUSTRALIA: **Original**

Period	Tasmania				Australia					
	Imports	Imports: change over preceding period		Exports: change over preceding period		Imports	Imports: change over preceding period		Exports <sup>2</sup>	Change over preceding period
		\$'m	%	\$'m	%		\$'m	%		
1996-97	396	13	1 708	5	78 998	2	78 932	4		
1997-98	385	-3	2 136	25	90 684	15	87 770	11		
1998-99	407	6	r 2 018	-6	r 97 613	8	r 86 017	-2		
<b>1998</b>										
September	48	44	146	12	8 544	5	7 604	-2		
October	44	-7	158	8	9 002	5	7 816	3		
November	35	-21	150	-5	8 535	-5	7 291	-7		
December	31	-11	172	15	7 820	-8	7 898	8		
<b>1999</b>										
January	32	2	135	-21	7 231	-8	r 6 303	-20		
February	30	-6	r 140	4	7 112	-2	6 245	-1		
March	33	11	r 255	82	8 699	22	7 333	17		
April	29	-13	198	-22	7 731	-11	r 6 430	-12		
May	29	0	r 139	-30	r 7 747	0	r 6 974	8		
June	23	-22	243	75	8 142	5	r 6 893	-1		
July	39	75	r 158	-35	8 179	0	r 7 143	r 4		
August	32	-19	r 150	-5	r 8 873	8	r 7 340	3		
September	43	35	114	-24	9 024	2	7 412	1		

<sup>1</sup> It is difficult to get a complete picture of Tasmania's trade performance as imports recorded by the ABS include only goods imported directly into the State from overseas, and reported by the Australian Customs Service. Many of Tasmania's goods imported for direct consumption, or input into further processing industries, arrive via interstate ports, and are not included in this table.

<sup>2</sup> Includes re-exports.

## 37

MERCHANDISE EXPORTS, by selected countries and country groups: **Original**

Period	European Community			East Asia			Hong Kong	ASEAN <sup>1</sup>	Total all countries
	United States of America	United Kingdom	Total European Community	Japan	Korea	Taiwan			
	\$'000	\$'000	\$'000	\$'000	\$'000	\$'000			
1996-97	117 245	166 308	299 844	467 855	64 135	93 951	100 881	364 586	1 708 322
1997-98	176 175	25 063	338 791	549 048	67 801	150 405	132 551	399 472	2 136 171
1998-99	235 787	28 691	r 278 037	r 466 216	r 100 727	150 071	152 533	r 353 441	r 2 018 323
<b>1998</b>									
September	26 195	797	9 845	26 704	r 4 258	13 518	14 307	27 355	r 145 982
October	8 842	776	9 258	47 311	9 542	12 900	11 503	39 620	157 588
November	30 044	2 438	10 631	30 573	10 115	9 734	11 037	24 382	149 885
December	24 835	765	12 761	55 992	14 878	9 615	9 098	22 082	171 801
<b>1999</b>									
January	6 028	3 834	9 928	36 522	4 900	15 231	13 337	32 803	134 961
February	13 874	3 491	14 475	33 144	r 11 379	10 973	12 835	23 056	r 139 932
March	37 059	4 124	r 86 867	r 41 363	r 7 429	11 682	11 872	38 793	r 254 706
April	31 625	3 548	r 17 877	r 34 933	9 870	10 190	15 591	27 285	r 197 773
May	16 130	2 544	9 143	r 33 234	r 4 965	12 897	14 322	r 22 457	r 138 931
June	13 810	1 855	76 630	r 58 176	r 12 947	13 709	13 184	30 452	r 243 012
July	25 199	2 834	r 14 114	r 25 878	r 9 403	r 13 917	r 17 700	r 30 954	r 157 954
August	r 13 943	792	r 5 106	r 40 992	r 7 389	r 16 654	r 18 708	r 25 581	r 149 526
September	11 412	860	6 728	27 270	7 093	14 399	9 480	19 509	113 722

<sup>1</sup> ASEAN member countries are: Brunei, Indonesia, Laos, Malaysia, Myanmar, Philippines, Singapore, Thailand and Viet Nam.

## 38 MERCHANDISE EXPORTS, by selected commodity groups: **Original**

Period	Meat and meat preparations	Dairy products	Fish, crustaceans and molluscs	Vegetables and fruit	Wood and woodchips	Textile fibres and wastes	Metallic ores and metal scrap
	\$'000	\$'000	\$'000	\$'000	\$'000	\$'000	\$'000
1996-97	55 604	110 108	121 996	36 541	241 388	38 762	184 100
1997-98	71 918	133 675	141 205	55 242	311 359	29 641	254 054
1998-99	65 026	102 709	136 268	54 907	r 295 360	24 955	r 278 001
<b>1998</b>							
September	3 291	5 608	12 952	1 652	r 12 566	1 593	12 573
October	3 852	8 119	7 915	1 095	25 095	2 406	33 704
November	4 563	10 122	7 096	177	28 936	1 908	24 505
December	6 415	11 394	12 110	219	30 445	4 494	37 028
<b>1999</b>							
January	6 764	9 411	12 860	654	20 394	1 026	22 666
February	6 027	7 514	10 290	4 646	24 055	1 413	r 13 551
March	5 034	12 277	7 613	9 368	r 30 026	4 989	r 25 070
April	5 229	12 071	13 251	13 563	r 24 208	1 938	r 20 539
May	6 307	7 720	9 516	10 942	r 22 669	475	r 15 242
June	7 900	8 173	9 071	4 508	r 33 433	671	r 37 755
July	r 6 603	r 3 421	r 14 151	r 3 718	r 16 956	1 538	r 18 683
August	r 5 468	2 992	r 13 573	r 2 568	r 31 988	891	15 025
September	4 947	2 502	13 280	1 373	19 385	1 990	12 506
Period	Medical and pharmaceut- ical products	Paper and paperboard	Iron and steel	Non-ferrous metals	Road vehicles & transport equipment	Other & combined confidential items	Total all commodity groups
	\$'000	\$'000	\$'000	\$'000	\$'000	\$'000	\$'000
1996-97	22 886	31 913	82 219	438 558	212 341	131 907	1 708 322
1997-98	34 755	21 222	76 463	557 126	280 251	169 261	2 136 171
1998-99	52 330	4 130	95 265	544 311	173 015	192 045	r 2 018 323
<b>1998</b>							
September	6 492	11	15 315	57 485	749	15 696	r 145 982
October	3 980	289	7 137	36 898	2	27 097	157 588
November	2 647	249	3 279	51 278	1 330	13 795	149 885
December	3 129	626	8 473	46 084	16	11 369	171 801
<b>1999</b>							
January	6 248	1 198	6 926	37 556	328	8 929	134 961
February	5 245	402	6 088	40 608	583	19 512	r 139 932
March	4 856	335	13 502	54 787	65 401	21 448	r 254 706
April	3 506	237	5 681	50 410	34 067	13 072	r 197 773
May	3 003	510	7 598	37 600	109	17 240	r 138 931
June	3 064	195	11 744	42 313	70 295	13 891	r 243 012
July	5 303	r 163	5 418	64 893	58	r 17 051	r 157 954
August	7 100	380	75	r 49 989	495	r 18 982	r 149 526
September	4 096	45	61	37 559	1 008	14 970	113 722

	NSW	Vic.	Qld	SA	WA	Tas.	Aust. <sup>1</sup>
<b>Population</b>							
Estimated resident population, March 1999 ('000) p	6 397.2	4 701.4	3 498.2	1 491.9	1 854.6	<b>470.5</b>	18 918.4
Proportion of Australian population, March 1999 (%) p	33.8	24.9	18.5	7.9	9.8	<b>r 2.5</b>	100.0
Population growth rate, 12 months to March 1999 (%) p	1.2	1.2	1.7	0.5	1.8	<b>-0.4</b>	1.3
<b>Labour Force</b>							
Employment growth, 12 months to October 1999 (trend series) (%)							
Males	3.3	1.9	0.4	2.0	1.9	<b>1.7</b>	2.1
Females	2.0	2.9	3.3	2.9	2.6	<b>0.2</b>	2.7
Persons	2.7	2.3	1.7	2.4	2.2	<b>1.0</b>	2.4
Unemployment rate (trend series), October 1999 (%)	6.4	7.0	8.3	8.5	6.8	<b>9.0</b>	7.1
Unemployment growth, 12 months to October 1999 (trend series) (%)	-9.4	-9.0	-1.8	-11.7	-3.2	<b>-14.1</b>	-7.7
Participation rate (trend series), October 1999 (%)	62.1	63.2	64.7	60.6	66.7	<b>58.5</b>	63.4
Job vacancy rate, August 1999 (%)	1.5	1.3	0.8	1.0	1.1	<b>1.0</b>	1.2
Working days lost through industrial disputes, 12 months to August 1999 (days per '000 employees)	69	107	40	40	76	<b>6</b>	69
<b>Wages and Prices</b>							
Average weekly total earnings, full-time adult employees (trend series) August 1999 (\$)							
Males	903.90	826.40	797.30	792.70	881.50	<b>782.70</b>	852.20
Females	722.80	697.20	641.00	656.10	653.80	<b>632.40</b>	690.40
Persons	835.60	778.90	739.40	743.40	800.40	<b>729.50</b>	793.10
Average weekly total earnings, full-time adult employees, growth rate (trend series), 12 months to August 1999 (%)	4.1	0.9	0.7	1.2	1.4	—	2.1
Consumer price index, all groups, annual growth to September quarter 1999 (%) <sup>2</sup>	1.8	1.9	1.2	1.7	1.9	<b>0.4</b>	1.7
<b>Building</b>							
% change in the number of new residential dwelling units approved in the 12 months ended September 1999, over the same period previous year	-1.6	15.5	-17.0	6.3	14.5	<b>-10.6</b>	1.4
<b>Private Investment and Retail Trade</b>							
% change in private new capital expenditure, 12 months ended June 1999, over the same period previous year (original)	-1.1	2.8	0.1	-28.7	-20.5	<b>-26.6</b>	-3.3
% change in <i>trend</i> estimates turnover of retail establishments, September 1999 (change from corresponding month of the previous year)	7.3	11.5	4.9	2.9	1.4	<b>5.7</b>	6.9
<b>Transport</b>							
% change in number of new motor vehicles (excluding motorcycles) registered in the 12 months ended September 1999, over the same period previous year	0.7	4.0	-7.2	-7.2	-7.9	<b>-7.1</b>	-2.0
<b>Agriculture<sup>1</sup></b>							
% change in the number of livestock slaughtered 12 months ended September 1999 over the same period previous year (original)							
Cattle and calves	-13.1	-6.2	8.8	-19.6	-4.8	0.1	-3.1
Sheep and lambs	-2.0	-0.8	7.2	-13.0	-4.1	5.0	-2.7
<b>Tourism: Room occupancy rates</b>							
Hotels, motels & guest houses, & serviced apartments with facilities, June quarter 1999 (%)	57.9	55.4	56.1	54.6	53.3	<b>47.6</b>	56.2
<b>Australian National and State Accounts</b>							
% change in Domestic (State) Final Demand, <sup>3</sup> Chain Volume measures Trend Series							
Mar. qtr 1999 to June qtr 1999	2.1	1.2	0.8	-0.1	0.6	<b>2.0</b>	0.9
June. qtr 1998 to June qtr 1999	6.3	5.1	6.8	-0.2	-0.5	<b>4.0</b>	4.3

<sup>1</sup> Australian totals include the ACT and NT, with the exception of Agriculture, which excludes both. <sup>2</sup> CPI applies to State capitals.

<sup>3</sup> Total of four types of expenditure: Private investment, Private consumption, Government investment, Government consumption.

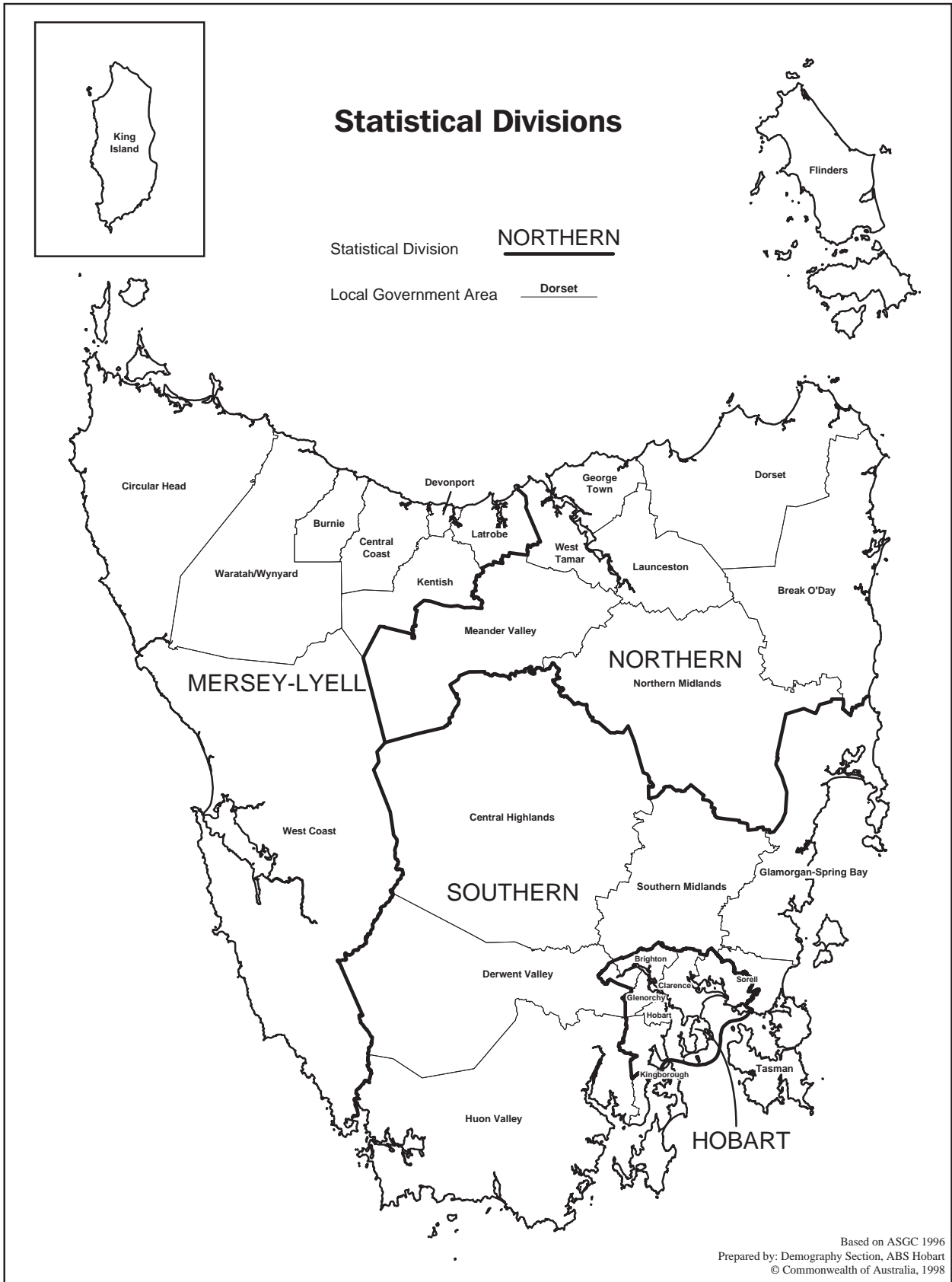
Particulars	Unit	Greater Hobart and Southern Statistical Division	Northern Statistical Division	Mersey-Lyell Statistical Division	Tasmania
<b>Area</b> , 30 June 1996	km <sup>2</sup>	25 521	19 935	22 507	67 964
<b>Population</b>					
Estimated resident population, 30 June 1996	no.	230 187	134 047	110 209	474 443
Estimated resident population, 30 June 1998	no.	229 593	133 229	109 063	471 885
Births 1997 <sup>1</sup>	no.	2 575	1 735	1 518	6 007
Deaths 1997 <sup>1</sup>	no.	1 837	1 098	866	3 809
<b>Labour Force</b> (original), October 1999					
Total employed.	no.	95 900	55 800	43 700	195 400
Total unemployed	no.	10 100	4 700	5 500	20 300
Unemployment rate	%	9.5	7.7	11.2	9.4
Participation rate	%	57.8	57.6	60.3	58.3
<b>Schools, 1997<sup>2</sup></b>					
Government	no.	102	60	60	222
Non-government	no.	35	16	16	67
<b>Full-time school students, 1997<sup>2</sup></b>					
Government	no.	29 355	17 913	15 653	62 921
Non-government	no.	12 128	4 909	4 199	21 236
<b>Educational qualification, 1996 Census<sup>3</sup></b>					
Bachelor degree or higher <sup>4</sup>	no.	17 058	7 152	3 908	28 184
Undergraduate diploma	no.	5 893	3 268	2 181	11 374
Associate diploma	no.	3 775	1 902	1 466	7 184
Skilled vocational	no.	16 255	0 040	8 841	35 238
Basic vocational	no.	4 548	2 632	2 305	9 515
<b>Agriculture</b>					
Establishments with agricultural activity, 1997-98 season	no.	1 138	1 584	1 761	4 483
Total area of establishments	ha	751 167	837 147	326 171	1 914 485
Crops, production, 1997-98 season					
Potatoes	tonnes	2 785	119 771	251 022	373 578
Onions	tonnes	777	9 613	41 555	51 945
Apples	tonnes	36 097	4 427	6 168	46 693
Barley	tonnes	6 793	21 527	2 597	30 917
Livestock, 1997-98 season					
Beef cattle	no.	83 229	213 631	213 562	510 422
Dairy cattle	no.	7 845	79 693	130 180	217 718
Sheep and lambs	no.	1 768 448	1 926 966	173 454	3 868 868
Pigs	no.	3 235	14 899	6 165	24 299
Gross value of agric. production, 1997-98	\$m	n.y.a.	n.y.a.	n.y.a.	678
<b>Business locations, September 1998</b>					
Locations with manufacturing activity					
Less than 20 employees	no.	424	327	257	1 008
20 or more employees	no.	83	67	48	198
Total	no.	507	394	305	1 206
Locations with retail activity					
Less than 20 employees	no.	2 046	1 346	1 133	4 525
20 or more employees	no.	82	43	35	160
Total	no.	2 128	1 389	1 168	4 685
<b>Building, 1998-99</b>					
Total dwelling units approved	no.	731	431	248	1 410
Value of total residential building approved	\$'000	87 612	50 579	29 843	168 035
Value of total building approved	\$'000	199 614	83 883	59 083	342 580
<b>Dwellings, Census 1996<sup>3</sup></b>					
Total dwellings	no.	98 815	57 467	45 529	201 820
Occupied private dwellings	no.	85 255	49 759	40 183	175 197
Fully owned	no.	34 338	21 563	18 359	74 260

<sup>1</sup> Births and deaths are based on usual residence year of registration.  
Total Tasmania includes usual residences other than Tasmanian Statistical Divisions.

<sup>2</sup> Source: DETYA and Tasmanian Department of Education.

<sup>3</sup> Total includes migratory statistical division.

<sup>4</sup> Includes higher degree, postgraduate diploma and bachelor degree.







## SELF-HELP ACCESS TO STATISTICS

- CPI INFOLINE* For current and historical Consumer Price Index data, call 1902 981 074 (call cost 75c per minute).
- DIAL-A-STATISTIC* For the latest figures for National Accounts, Balance of Payments, Labour Force, Average Weekly Earnings, Estimated Resident Population and the Consumer Price Index call 1900 986 400 (call cost 75c per minute).
- INTERNET* [www.abs.gov.au](http://www.abs.gov.au)
- LIBRARY* A range of ABS publications is available from public and tertiary libraries Australia-wide. Contact your nearest library to determine whether it has the ABS statistics you require.

## WHY NOT SUBSCRIBE?

- PHONE* +61 1300 366 323
- FAX* +61 03 9615 7848

## CONSULTANCY SERVICES

ABS offers consultancy services on a user pays basis to help you access published and unpublished data. Data that is already published and can be provided within 5 minutes is free of charge. Statistical methodological services are also available. Please contact:

<i>INQUIRIES</i>	<i>City</i>	<i>By phone</i>	<i>By fax</i>
	Canberra	02 6252 6627	02 6207 0282
	Sydney	02 9268 4611	02 9268 4668
	Melbourne	03 9615 7755	03 9615 7798
	Brisbane	07 3222 6351	07 3222 6283
	Perth	08 9360 5140	08 9360 5955
	Adelaide	08 8237 7400	08 8237 7566
	Hobart	03 6222 5800	03 6222 5995
	Darwin	08 8943 2111	08 8981 1218

*POST* Client Services, ABS, PO Box 10, Belconnen ACT 2616

*EMAIL* [client.services@abs.gov.au](mailto:client.services@abs.gov.au)



2130360012998  
ISSN 1034-1803

RRP \$18.00